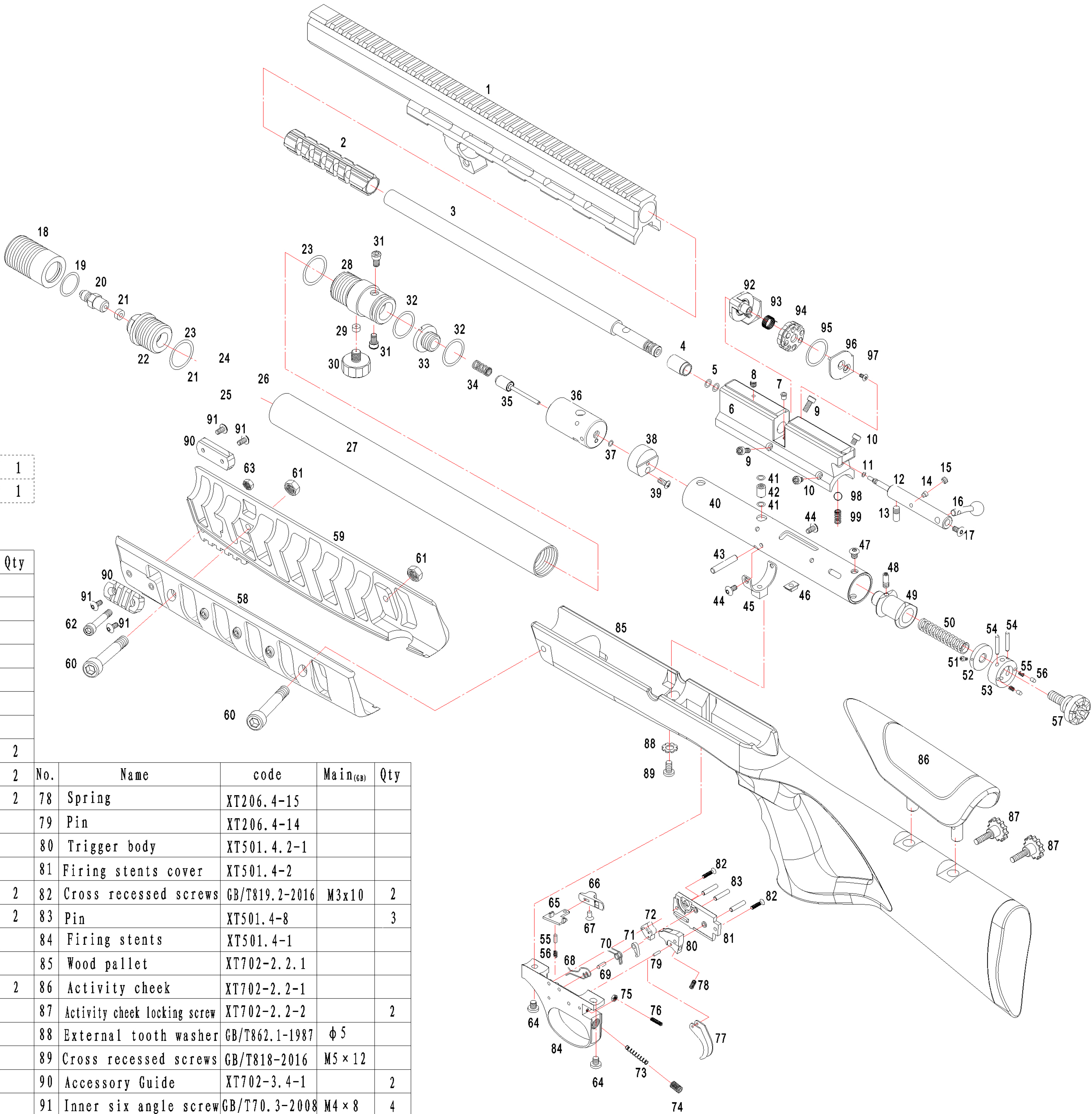


No.	Name	code	Main <sub>(GB)</sub>	Qty
1	Barrel sleeve	XT702-3.0-1		
2	Silencer	XT702-3.0-2		
3	Barrel	XT702-3.1-1		
4	End cap	XT702-3.0-3		
5	O-ring	GB/T3452.1-2005φ8.2x1.8		2
6	Barrel seat	XT702-3.1-2		
7	Embedded ball head spring plunger			
8	Set screws	GB/T79-2007	M4x10	
9	Inner six angle screw	GB/T70.1-2008	M4x8	2
10	Inner six angle screw	GB/T70.1-2008	M4x5	2
11	O-ring(.177)	GB/T3452.1-2005φ2.6x1		2
12	Bullet push rod	XT702-3.1.1-1		
13	Bullet push rod pin	XT702-3.1-4		
14	Friction column	XT501.0.1-2		
15	Set screws	GB/T79-2007	M5x3	
16	Handle	XT702-3.1-3		
17	Inner six angle screw	GB/T70.3-2008	M4x16	
18	Sheath	XT702.2.1-2		
19	O-ring	GB/T3452.1-2005φ19x2.5		
20	Inflatable joints	XT702.2.1-3		
21	Seal Gasket	XT501.0-14		2
22	Charging valve seat	XT702.2.1-3		
23	O-ring	GB/T3452.1-2005φ21.2x2.65		2
24	Pneumatic valve	XT501.1-6		
25	Valve spring	XT501.1-7		
26	seat	XT501.1-9		
27	Front air chamber	XT702.2-1		
28	Pressure gauge seat	XT702.2-2		
29	Seal Gasket	XT702.2-3		
30	Pressure gauge	GB/T1227-2002		
31	Fixed screw	XT702.2-15		2
32	O-ring	GB/T3452.1-2005φ20x2.65		2
33	Valve cover	XT702.2.2-1		
34	Valve spring	XT702.2.2-2		
35	Valve rod combination	XT702.2.2.1		
36	Valve body	XT702-3.3.1-1		
37	O-ring	GB/T3452.1-2005φ2.8x1.8		
38	Nylon seat	XT702.2.2-4		
39	Cross recessed screws	GB/T818-2016	M4×12	
40	End air chamber	XT702.2-4		
41	O-ring	GB/T3452.1-2005φ5x1.5		2
42	Air guide pillar	XT702-3.0-4		
43	Fixed pin	XT702.2-14		
44	Inner six angle screw	GB/T70.2-2008	M4×8	2
45	Fixed seat	XT702.2-13		
46	Connecting nut	XT702.0-2		

(11)	O-ring(.22)	GB/T3452.1-2005	φ2.24x1.8	1
(11)	O-ring(.25)	GB/T3452.1-2005	φ3.15x1.8	1

No.	Name	code	Main <sub>(GB)</sub>	Qty
47	Inner six angle screw	GB/T70.2-2000	M5×6	
48	Hammer pin	XT702-3.3-2		
49	Hammer	XT702-3.3-1		
50	Hammer spring	XT702.2-7		
51	Indicator screw	XT702.2-9		
52	Adjustment block	XT702.2-8		
53	Adjusting seat	XT702.2-10		
54	Pin	XT702.2-12		2
55	Spring	XT501.4-7		2
56	Location pin	XT201.1.3-3		2
57	Adjusting screw	XT702.2-11		
58	Hand bracket (left)	XT702-3.4-2		
59	Hand bracket (right)	XT702-3.4-3		
60	Screws	GB/T70.1-2008	M5×45	2
61	Hexagon nut	GB/T6170-2015	M5	2
62	Screws	GB/T70.1-2008	M4×12	
63	Hexagon nut	GB/T6170-2015	M4	
64	Screws	GB/T818-2016	M5×8	2
65	Insurance tablets	XT501.4-5		
66	Dial button	XT501.4-6		
67	Screws	GB/T819.2-2016	M3x4	
68	Torsion spring	XT501.4-3		
69	Pin	XT501.4.1-3		
70	Torsion spring	XT501.4.1-2		
71	Block	XT501.4.1-4		
72	Resistance iron	XT501.4.1-1		
73	Trigger spring	XT501.4-4		
74	Set screws	GB/T79-2007	M6X10	
75	Hexagon nut	GB/T6172.1-2016	M3	
76	Set screws	GB/T79-2007	M3X12	
77	Trigger	XT501.4.2-2		

No.	Name	code	Main <sub>(GB)</sub>	Qty
78	Spring	XT206.4-15		
79	Pin	XT206.4-14		
80	Trigger body	XT501.4.2-1		
81	Firing stents cover	XT501.4-2		
82	Cross recessed screws	GB/T819.2-2016	M3x10	2
83	Pin	XT501.4-8		3
84	Firing stents	XT501.4-1		
85	Wood pallet	XT702-2.2.1		
86	Activity cheek	XT702-2.2-1		
87	Activity cheek locking screw	XT702-2.2-2		2
88	External tooth washer	GB/T862.1-1987	φ5	
89	Cross recessed screws	GB/T818-2016	M5×12	
90	Accessory Guide	XT702-3.4-1		2
91	Inner six angle screw	GB/T70.3-2008	M4×8	4
92	Elastic wheel seat	XT702-3.2-1		
93	Torsion spring	XT702-3.2-3		
94	Elastic wheel body	XT702-3.2-4		
95	O-ring	GB/T3452.1-2005	φ22x1.5	
96	Cover	XT702-3.2-2		
97	Inner six angle screw	GB/T70.3-2008	M3×8	
98	Steel ball	GB/T308.1-2013	φ4.5	
99	Spring	XTS9.3-6		



XISICO USA, INC