



4500 PSI/300Bar Air Compressor



RoHS

Instruction Manual

Compressor II Series

TXEDT031 (Shutoff compressor manually)



TXEDT032 (Shutoff compressor automatically/Set pressure version)



TXEDT033 (Shutoff compressor automatically/Set pressure and auto
purge version)



Rev 1.1 2020

INTRODUCTION

Thank you for choosing Tuxing Air Compressor.

Follow the instructions when operating this compressor. It will allow you to fill your storage reservoirs or air cylinders easily. Please read the manual very carefully before use. Any damage or injury resulting from misuse or incorrect handling is the sole responsibility of the owner and/or operator. For your own safety and the safety of others, carefully following warning & important bellows.

Warning& Important

1. Please use in a well-ventilated area. Do not operate in an area where liquid contaminants can be drawn into the compressor.
2. Do not operate near some places with smoke or open flame.
3. This compressor generates pressurized air; it will cause heat and noise. Gloves & hearing protection & safety glasses should always wear during use.
4. The compressor should only be dismantled by a competent technician; or serious damage/injury may be caused to you or others.
5. Improper disassembly and reassembly will result in leaks, damage, and may void your warranty.
6. Never attempt to dismantle any portion of this compressor when it is pressurized or is hot after running.
7. This compressor is designed to produce dry compressed air only. Do not attempt to feed other gases or pressurized air through for compression. No other gas or gas combination can be used.
8. Do not operating temperature of 185° F / 85° C. That requires the crankcase has enough oil and enough cold water in the water bucket to make sure cooling is good. Long time continually running is not suggested, it will cause the temperature rising, and then to cause parts damaged and the machine life shortened.
9. Make sure the compressor voltage meets your local power supply
10. Make sure it has already added the lubricate oil before using
11. Make sure the power cord is fine before use (No wear and tear or heat damage)
12. Make sure do not operate air compressor with the shell removed
13. Make sure keep eyes on the compressor when it' s running, do not let the compressor overfill
14. Avoid your body too close the compressor when it is running
15. Failure to follow instructions and heed warnings may result in damage, serious injury.

Danger: DO NOT OVERFILL, DO NOT fill the pressure above 4500PSI /300Bar/30Mpa

Contents

Specifications.....	4
Assembly Instructions.....	5–6
Operation Instructions.....	6–7
Oil and Oil Change Intervals.....	7–8
Set pressure function.....	9
Troubleshooting.....	10
Warranty	11

Specifications

Model number	TXEDT032
Function	Shut off the compressor automatically
Voltage	100~130V / 220~240V
Size	58*52*48cm/ 22.83*20.47*18.90 inch
Weight	110V= 46KG/101.41lb
	220V=45KG/99.20lb
Working pressure	4500PSI /30Mpa /300Bar
Cooling system	Water and fan cooling
Air flow rate	50L/min
Inflating speed	2800R/min
Motor power rating	2.2KW
Oil recommend	100% synthetic compressor oil
Lubrication mode	Splash
OEM	YES
Certification	CE



Working pressure	4500PSI/300Bar/30Mpa	Auto stop function	Yes
Cylinder volume	≤6.8L	Filter system	Double filters dry pack air inlet
Safety design	Install burst disc and overload reset button	Motor material	Copper
Extra feature	Build in blow off system	Compression mode	Four strokes
Cooling way	Water and fan cooling, 5L water tank, 3 cooling fans, spiral tube.		

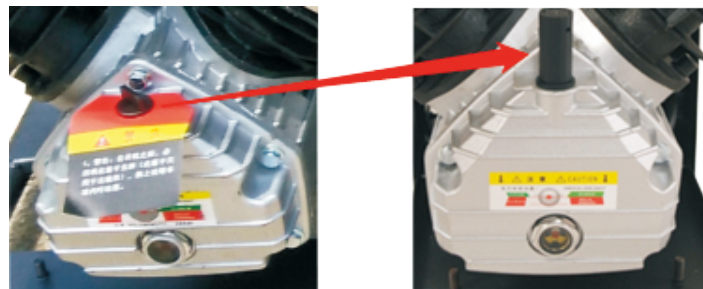
Suggest: Filling the volume under 6.8L from 0~300Bar.
Filling the volume from 6.8L~12L from 0~200Bar

Assembly Instructions

(1) Remove the rubber sealing plug by simply pulling it out and fill 5W40 motor oil or ISO 100 compressor oil. Fill oil up to the red indicator dot. **DO NOT OVERFILL!**



(2) Once an adequate amount of oil has been added, screw the oil breather plug into the threaded hole. **VERY IMPORTANT!!!**



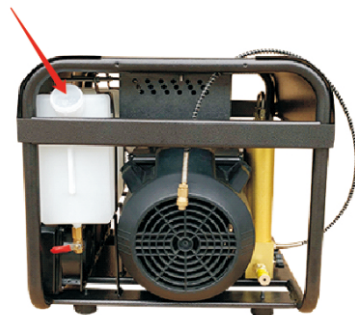
If not, any damage or injury occurs is the sole responsibility of the owner and/or operator.

(3) Cooling effect

(Water inlet cooling+ Sprial air tube +Three big fans + raditor)

Water inlet cooling:

Add the water to the water bucket directly, Don' t overfill.



Water tap

Install the water tap to drain off water easier.

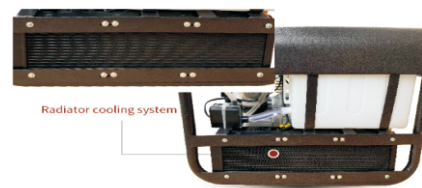
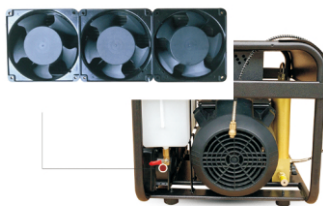


Water and volume recommended: Distilled water is better. Cooling water with ice but be sure can flow normally.

Sprial air tube +Three big fans + radiator

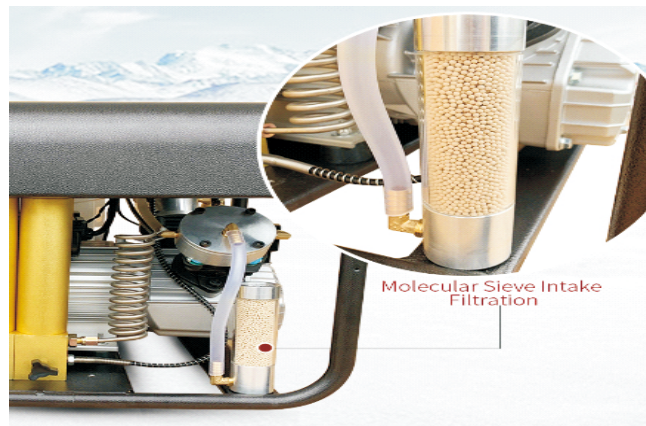
Gas Cooling Pipe

Using the spiral tube to make the air more cooler.

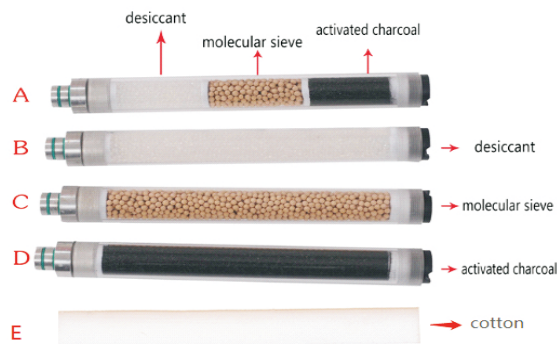


This really make cooling effect come true.

(4) Air intake with molecular sieve filtration



(5) Double filters -----Original fillers=



DOUBLE FILTERS COMPARISON

Tuxing new version filter	Other brand filter
<p>Advanced safety valve It will auto purge when it meets over-pressure</p>	<p>Without safety valve It has the possibility over charging</p>
<p>Filters with 3 fillers With activated charcoal, desiccant, Molecular sieve fillers. The real pure and clean air we get</p>	<p>Only activated charcoal filler Only with the activated charcoal filler Common filtration effect</p>

Air intake filtration + Double filters= Really get pure and clean air

Note: The fillers of the double cartridge can be chosen by yourself. If you need other extra fillers, please contact our customer service for assistance

Operation Instructions

Important: When we use the compressor for the FIRST TIME, do the following: Make sure your voltage is MATCH your local power supply (110V or 220V), Plug it into an active power outlet. Do not plug the hose with the test plug or connect anything. Simply turn the cooling system on, once the cooling system is running, turn the compressor on and let the unit run for around 5 minutes. Once the 5-minute period is over, turn the compressor off and allow the unit to COOL before restart.

Test the compressor: Connect the filling hose to the test plug, turn on the compressor, when pressure data in the pressure gauge shows the pressure reaches 300Bar/4500PSI, Turn off the compressor. That means the compressor in good condition.

Test the compressor: Connect the filling hose to the test plug, turn on the compressor, when pressure data in the pressure gauge shows the pressure reaches 300Bar/4500PSI, Turn off the compressor. That means the compressor in good condition.

(1) Open the pressure release valve by turning the screw every time to allow any excess oil/water to be released to make sure the compressor not in load status.

(2) Locate and screw the pressure release valve, this screw should be hand tight. (Need to fasten it)

(3) The hose on the compressor ends in a 8mm female quick disconnect attachment. If you are filling a regulated tank that uses a male quick disconnect nipple to fill, you can simply attach the female quick disconnect on the compressor hose directly to the male fitting on the tank.

If it is not male nipple in your side, you need to purchase suit one fit it, such as double male connectors.

Take this tank valve connect to gas cylinder for reference:



(4) When we see the water can flow normally, turn on the compressor.

(5) Monitor the compressor and device you are filling. DO NOT leave the compressor and object being filled unattended.

NOTE: If your tank already has a partial fill in it, you will want to keep the tank valve closed until compressor outlet pressure in the hose is close to the pressure already in the tank. Once the compressor fills the hose within 20bar of the pressure already in the tank, open the tank valve.

(6) Once the device you are filling reaches the desired fill pressure, loosen the release valve to release all of the air in the compressor to avoid the extra pressure in the compressor. If filling a tank, close the valve on the tank before bleeding the pressure. (Allow the cooling system to run for a couple of minutes, then unplug the water pump and disconnect hoses as desired.)

Note: It is normal if bleeding the pressure in the compressor expel some oil from the pressure release valve, it is recommended that you wear the glove and not stand closely. Bleeding the pressure will be loud, if you are in a close space or have sensitive ears it is recommended that you wear hearing protection, when bleeding the pressure, do not bother others if in a quiet condition.

(7) Disconnect the fill hose from your tank/air cylinder.

(8) Turn off the compressor finally.

Oil and Oil Change Intervals

Use the oil level window to monitor and maintain proper oil levels.

Check oil levels prior to every use of the compressor.

Fluid Type recommended : Regular motor oil in the crankcase is not recommended. ISO 100 high pressure air compressor oil is recommended for proper operation and longevity of this compressor.

(Such as Royal Purple Synfilm / Mobil brand etc)

Fluid Volume : In the middle of red dot

1. Change the oil for the 1st time after one month or 25 hours of use, whichever comes first.

2. Change the oil every three months or 50 hours of use, whichever comes first,

3. Change the oil every 100 hours of runtime or every year whichever occurs first

Operation in certain environments may require more frequent oil change intervals. Change the oil if it is visibly dark or dirty, or if it foams during use.

Set pressure function

Setting Pressure Version

The compressor will auto stop when it reaches the pressure you set.



A

B

C

D

1= Fill Pressure Adjustment (Desired pressure pointer)

2=Starting pressure (Pressure pointer)

3= Adjustment Knob

Procedure

(1) Picture B, it tells us we using adjustment knob. This will engage the adjustment and allow you to move the fill pressure adjustment pointer to the right. Set to your desired max fill pressure.

(2) Picture C, the pointer stays status:

Starting pressure shows 0 (zero) condition

Desired Pressure pointer we set at 4500PSI

(3) Picture D, it shows when it reaches the pressure we set, it can shutoff automatically.

IMPORTANT: Don't set the output pressure above 4500PSI(300Bar)

(4) When running the compressor, it shows the starting pressure pointer reaching the desired pressure pointer. That is the pressure we want.

(5) If you adjust the output pressure too high, you can bring it back down by simply moving the adjustment knob to the left.

NOTE: DO NOT adjust the output pressure setting once the compressor is running.

(6) When the compressor reaches the desired pressure we want (the intended max fill pressure) it will shut off automatically.

(7) Be aware that the compressor switch will still be in the "ON" position after it auto stops. You will need to turn it "OFF" before bleeding the pressure via the pressure release valve.

Troubleshooting

1. Issue – Compressor will not start or buzzing

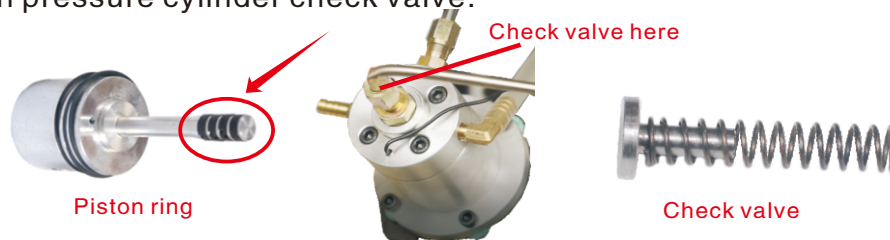
Possible (1) No power to compressor (2) Reset button is tripped (3) Inside with high pressure air (4) Voltage too low (5) Thin power cord wire

Resolution – (1) Plug compressor into active electrical outlet (2) Depress the reset button and recommend to connect the wall socket (3) Open the release valve (4) Change the normal voltage to use it (5) With thick power cord wire

2. Issue – Compressor is not building pressure or build pressure slowly/with little pressure

Possible: (1) Bleed valve is open /not fasten or other connectors loosen (2) Paper gasket or piston ring is dirty or wear out (3) Check valve is dirty or damage

Resolution – (1) Check every connector is fasten not air leaking (2) Remove the compressor head and clean the paper gasket, valve plate or piston ring even replace it (3) Clean or replace the high pressure cylinder check valve.



3. Issue – Burst disc failure

Possible: No in the right position or wear out during long time usage

Resolution – Shut off the compressor, Open the pressure release valve to let the remaining air vent from the compressor. Remove the broken burst disc from the blocked. You will find additional burst discs in the bag of spare parts that comes with the compressor. Install a new burst disc.

4. Issue – Operating temperature too high

Possible: (1) Cooling systems is off (2) No or less water in the tank (3) long time use or bad ventilation (4) Fan rotary direction

Resolution – (1) Make sure cooling system connect the power and water pump is working (2) Carefully drain and refill the coolant tank with more fresh cooling water, the water should be cold (3) No use more than 1 hour continually work, cool the compressor if it is hot (4) Fan should be in the right rotary direction in good ventilation condition

5. Issue – Coolant not circulating

Possible: (1) Frozen water in some places especially in winter (2) water pump falls off.

Resolution: (1) Discontinue operation until water thaws. Drain coolant tank and fill with antifreeze/water mix (2) Be sure the water pump is fine, hose not kinked and work properly.

6. Issue – The sound of compressor becomes noisy

Possible: (1) Connect rods damage (2) Water hose joint screw /muffler screw loose it (3) Put in the bumpy ground

Resolution – (1) Replace the set of the connect rods (2) Check the connector screw is loose or not, then fasten it (3) Put in the flat ground

7. Issue – Compressor smoke

Possible: High oil temperature

Resolution – Stop the compressor and cool down

8. Issue – Pressure gauge reach 300Bar/4500PSI easily

Possible: Air tank valve not fully open

Resolution – The gas doesn't fill into the gas cylinder/tank, fully open the valve of the gas cylinder.

9. Issue – There is big tolerance between the compressor gauge data and gas cylinder gauge data

Possible: (1) Gas cylinder valve not fully open (2) Pressure gauge problem

Resolution – (1) The gas doesn't fill into the gas cylinder completely, Fully open the valve of the gas cylinder to make the air totally into it (2) Change the pressure gauge

Any other problems, please contact our after-sell service for help.

Warranty

One Year Limited Warranty

Tuxing Compressor is manufactured to the highest possible standards, using quality materials to give a lifetime of service. In the unlikely event that there are any defects in materials or workmanship in the first twelve months after purchase, we will guide to support technical and replace the defective items under warranty if used correctly

What Is Covered

- Repairs required due to manufacturing defect
- Transportation charges to consumer for repaired product

What is NOT covered?

- (1) Any damage or faults caused by abuse or failure to perform normal maintenance.
- (2) Shipping damage or damages resulting from drops, impacts, or natural disasters
- 3) Any component that has been modified in any way
- 4) Parts subject to normal wear and tear.
- 5) Has been fitted with non--Tuxing parts.

Note: Provide original record of purchase for warrant service

Warranty claims:

Contact our after-service staff directly.

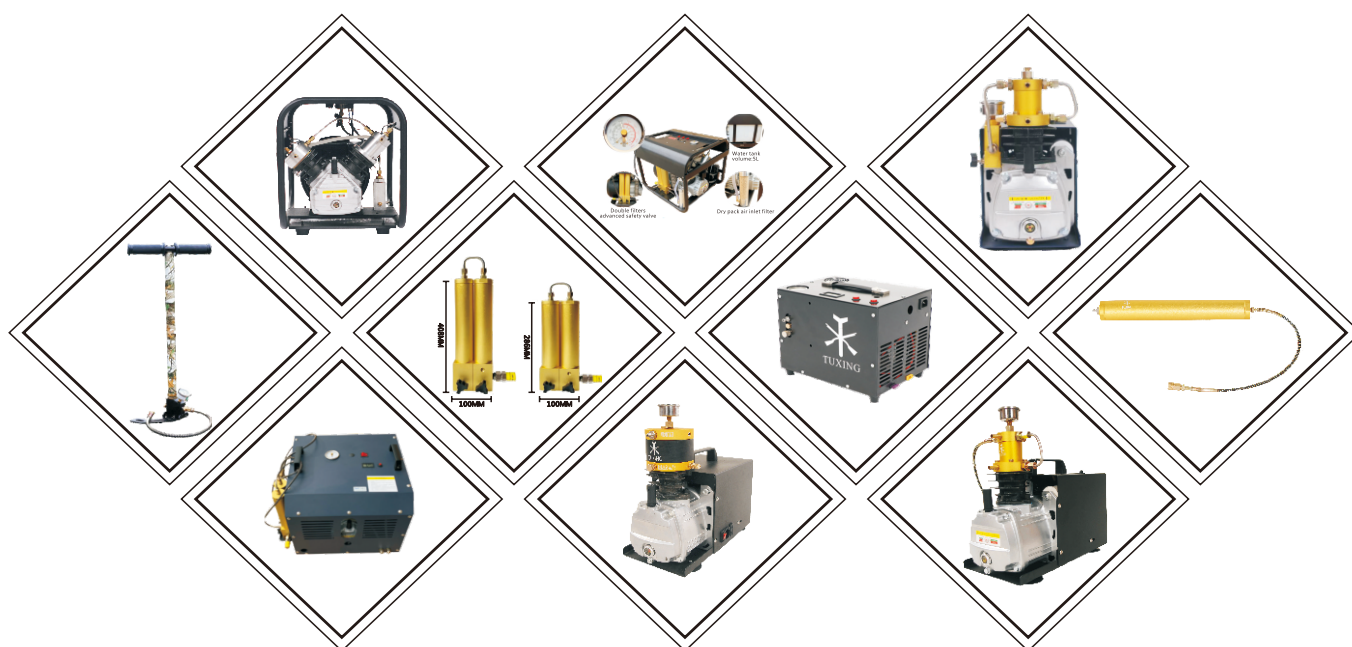
For more information about this product, Pls check the youtube link.



www.youtube.com/tuxingcn



Learn more



Email: Service@tuxingcn.com

Tuxing brand, make your outdoor activities easier.

www.sbtechcn.com