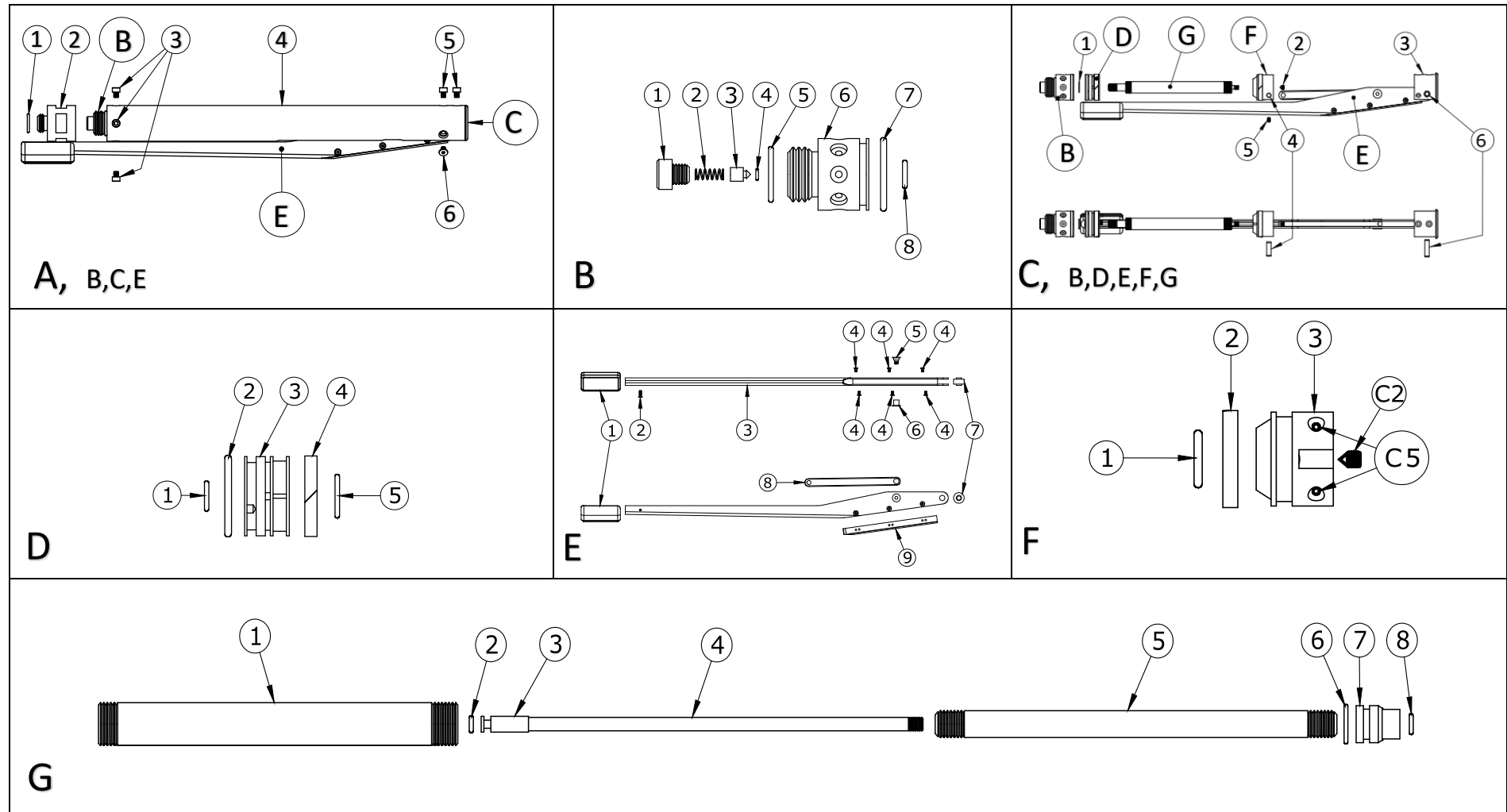


Model	Other model names	Date	Revision	Revision date
Build in Rifle Pump		2019-12-05	-	



Model	Other model names	Date	Revision	Revision date
Build in Rifle Pump		2019-12-05	-	

NO	ART. NO	DESCRIPTION	NO	ART. NO	DESCRIPTION	NO	ART. NO	DESCRIPTION
A1	19088	O-ring 15,88x2,62 NBR90	C1	16028	O-ring 12x1 NBR70	E6	19054	Linkage Screw Int
A2	19048	Adaptor M26,5x1,5 > M20x1 v8	C2	2534	Grubscrew 5x6	E7	N/A	Included in E3
A3	2509	Screw M5x6	C3	19070	Tube End / Pumparm Mount	E8	19077	Linkage
A4	19076	Outer Tube	C4	11502	Pivot Pin 2x20	E9	N/A	Included in E3
A5	2509	Screw M5x6	C5	2500	Grub Screw M3x6	F1	12046	O-ring 15,88 x 2,62 NBR70
A6	19025	Screw M5x8 Coned	C6	19078	Pivot pin 6x24	F2	19073	Supportring v8
B1	19075	Backvalve Lid v8	D1	5104	O-ring 9,3 x 2,4 NBR70	F3	19050	Linkage Mount
B2	5204	Spring 0,5x3x15	D2	19092	O-ring 30,2 x 3 NBR 70	G1	19090	Tube 16mm
B3	19002	Backvalve Red	D3	19046	Big Piston	G2	5107	O-ring 2,9 x 1,78 PUR90
B4	5111	O-ring 2,5 x 1,5 NBR90	D4	19073	Supportring v8	G3	19087	Small Piston
B5	11624	O-ring 22 x 2,5 NBR70	D5	12046	O-ring 15,88 x 2,62 NBR70	G4	19089	Rod 5mm
B6	19049	Tube end 26,5x1,5 v8	E1	19071	Handle	G5	19085	Tube 10mm
B7	19082	O-ring 30x3 NBR 70	E2	2508	Countersunk Screw M3x10	G6	19081	O-ring 11,1x1,6 NBR 70
B8 (outer)	5105	O-ring 9,3 x 2,4 NBR90	E3	19091	Pumparm	G7	10974	Mid Piston
B8 (inner)	4528	O-ring 7,66 x 1,78 NBR70	E4	N/A	Included in E3	G8	1504	O-ring 4,42 x 2,62 NBR70
			E5	19053	Linkage Screw Ext			