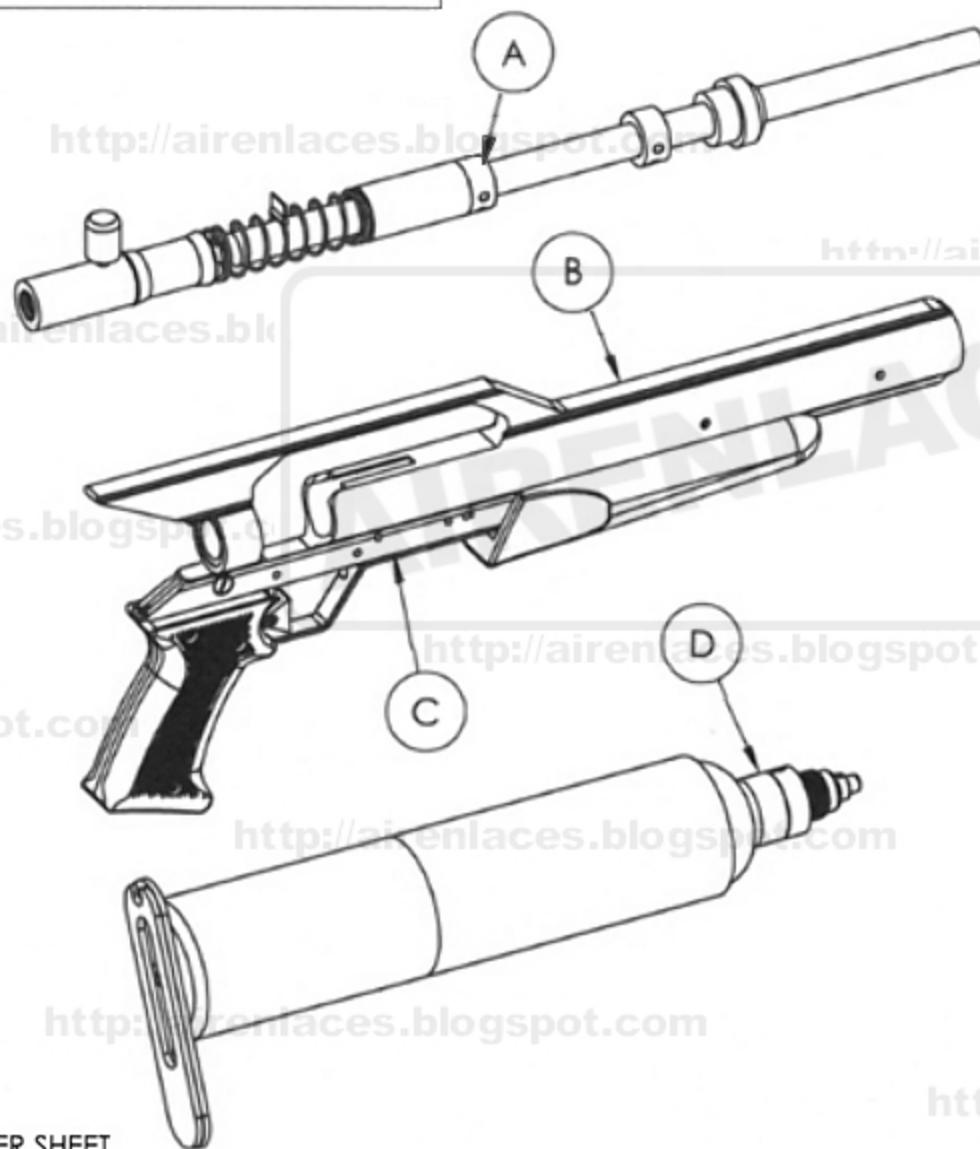
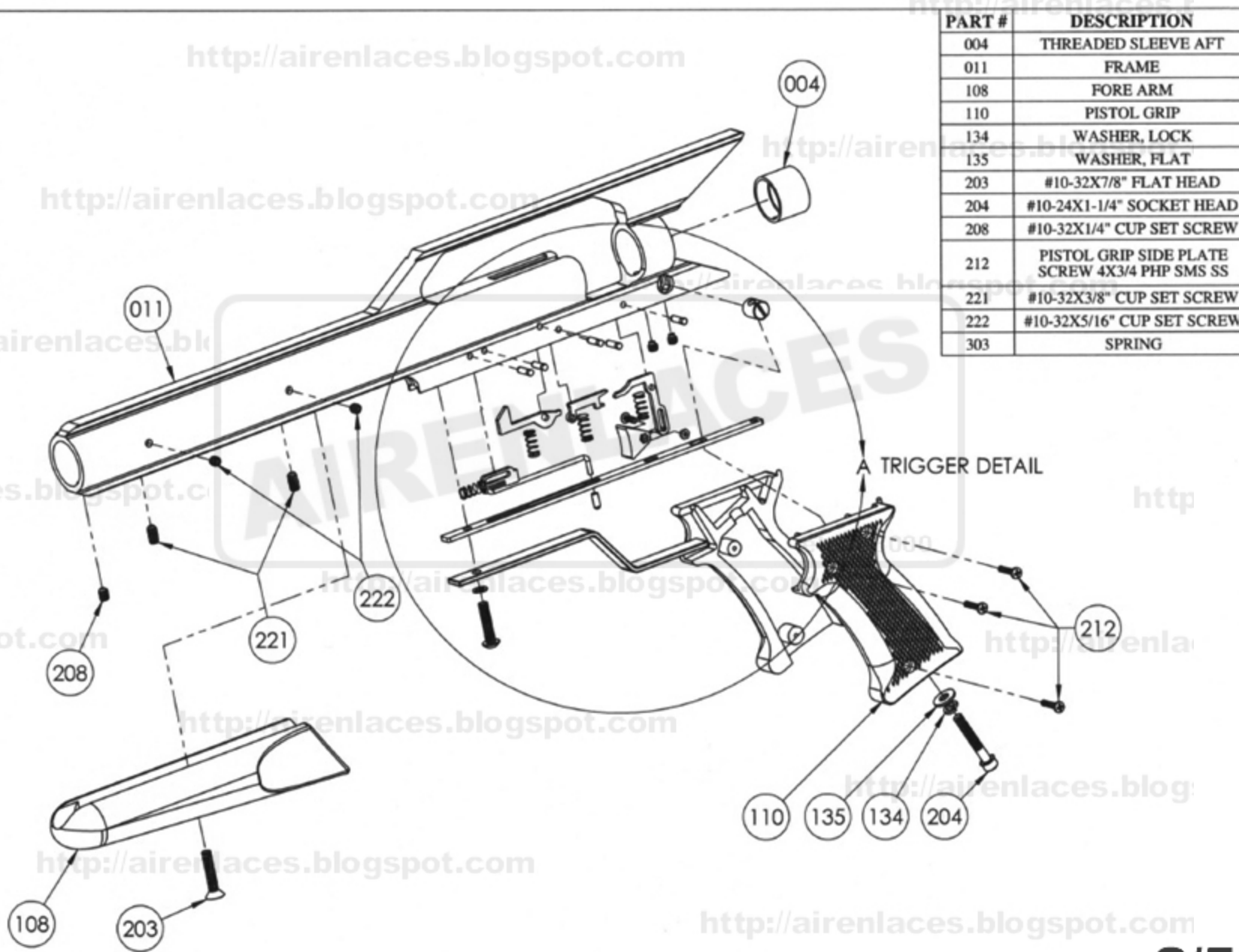
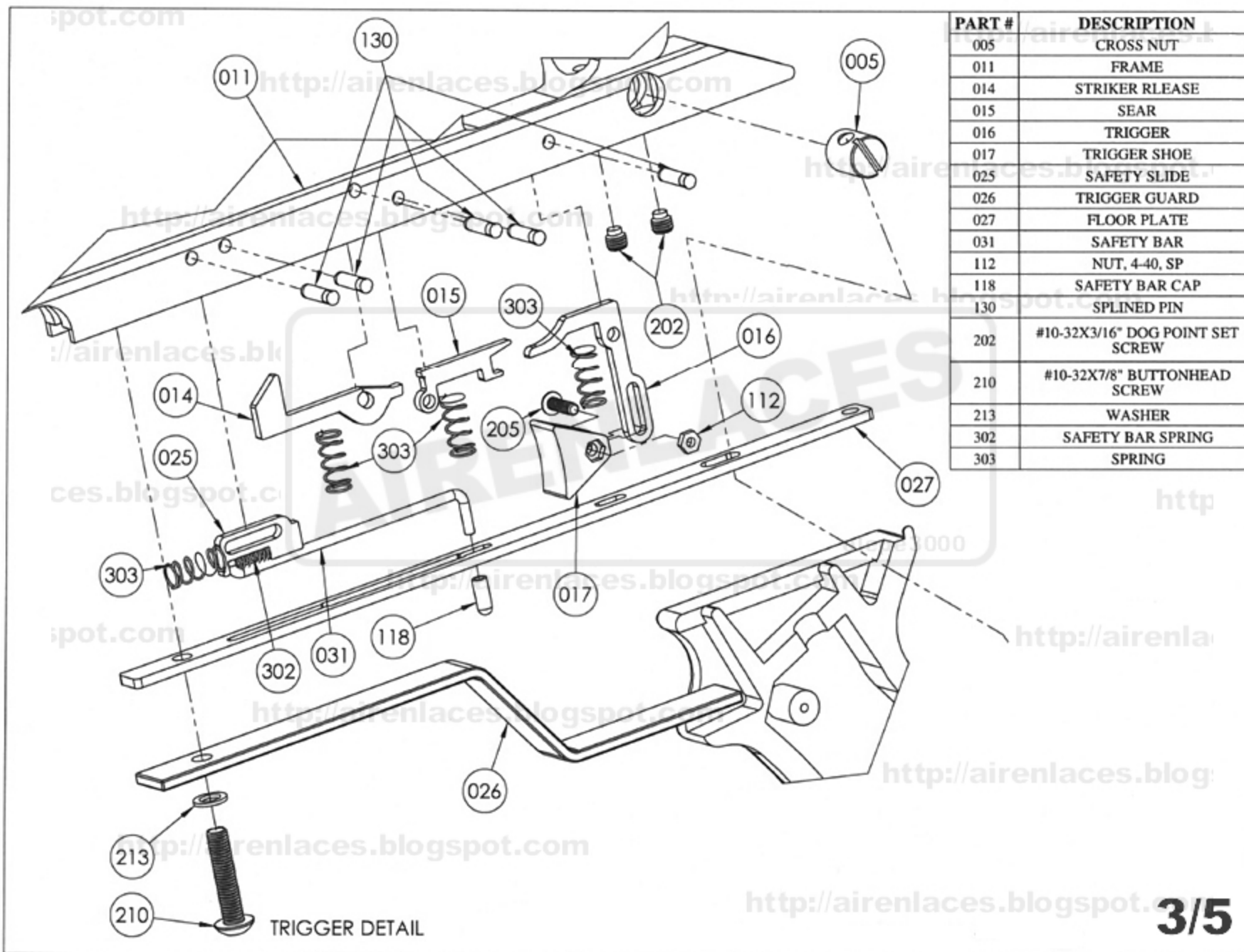


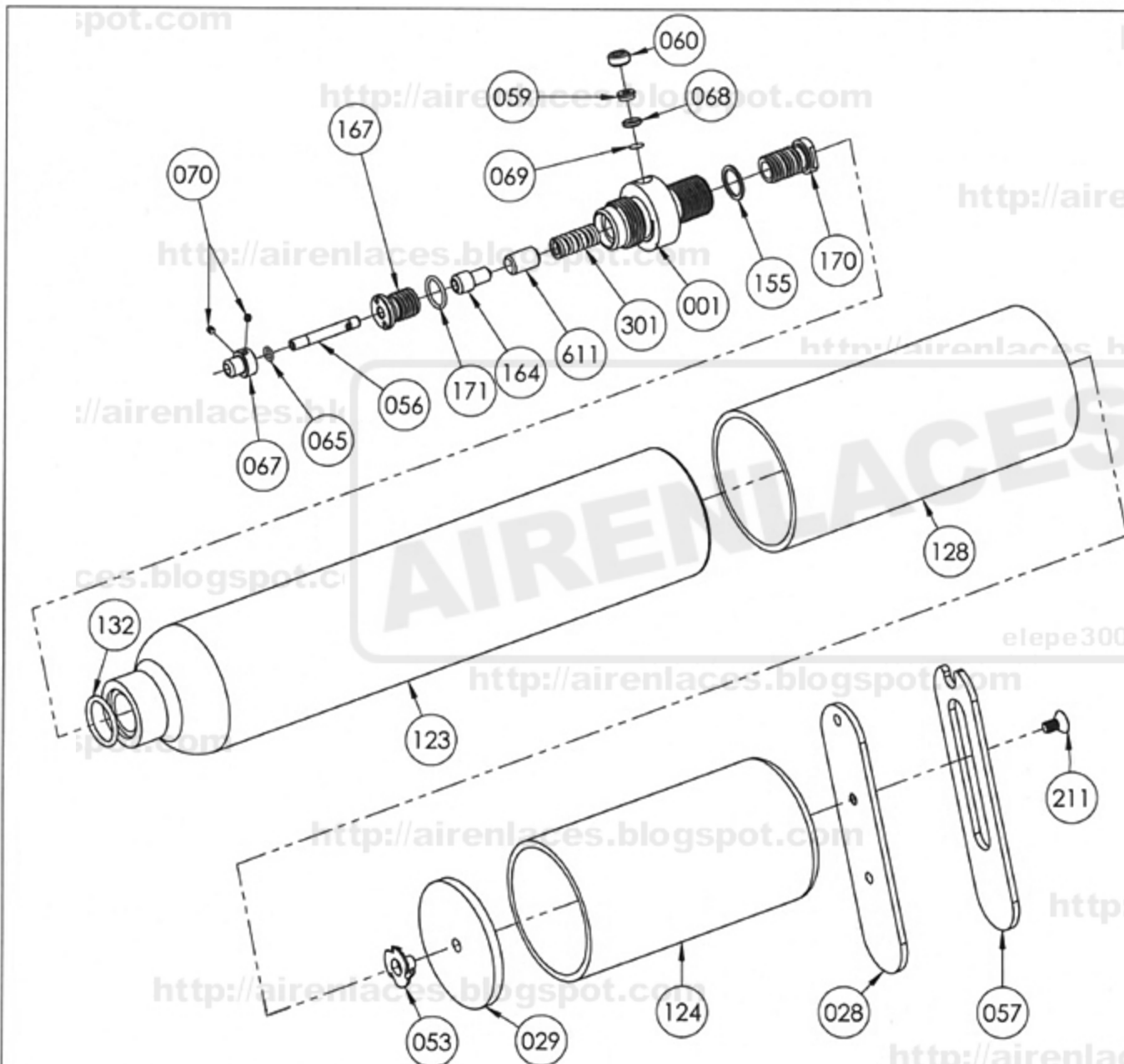
A	UPPER INTERNAL FRAME ASSEMBLY
B	LOWER FRAME ASSEMBLY
C	TRIGGER DETAIL
D	VALVE AND TANK ASSEMBLY





PART #	DESCRIPTION
004	THREADED SLEEVE AFT
011	FRAME
108	FORE ARM
110	PISTOL GRIP
134	WASHER, LOCK
135	WASHER, FLAT
203	#10-32X7/8" FLAT HEAD
204	#10-24X1-1/4" SOCKET HEAD
208	#10-32X1/4" CUP SET SCREW
212	PISTOL GRIP SIDE PLATE SCREW 4X3/4 PHP SMS SS
221	#10-32X3/8" CUP SET SCREW
222	#10-32X5/16" CUP SET SCREW
303	SPRING





PART #	DESCRIPTION
001	VALVE BODY
028	BUTT PLATE
029	BACKING PLATE
053	TEE NUT
056	STANDARD VALVE PIN
057	BUT PLATE PAD
059	PRD
060	SOCKET JAM NUT
065	VALVE PIN CAP O-RING
067	CAP, PIN
068	COPPER CUP
069	BURST DISC
070	#4-40X1/8" CONE POINT SET SCREW
123	TANK
124	TANK COVER
128	TANK SLEEVE
132	O-RING
155	NYLON RETAINER SEAL
164	SEAT, VALVE
167	INSERT, VALVE
170	RETAINER, SPRING
171	VALVE INSERT O-RING
211	#10-32X3/8" FLAT HEAD
301	VALVE SPRING
611	SPACER

VALVE AND TANK ASSEMBLY

