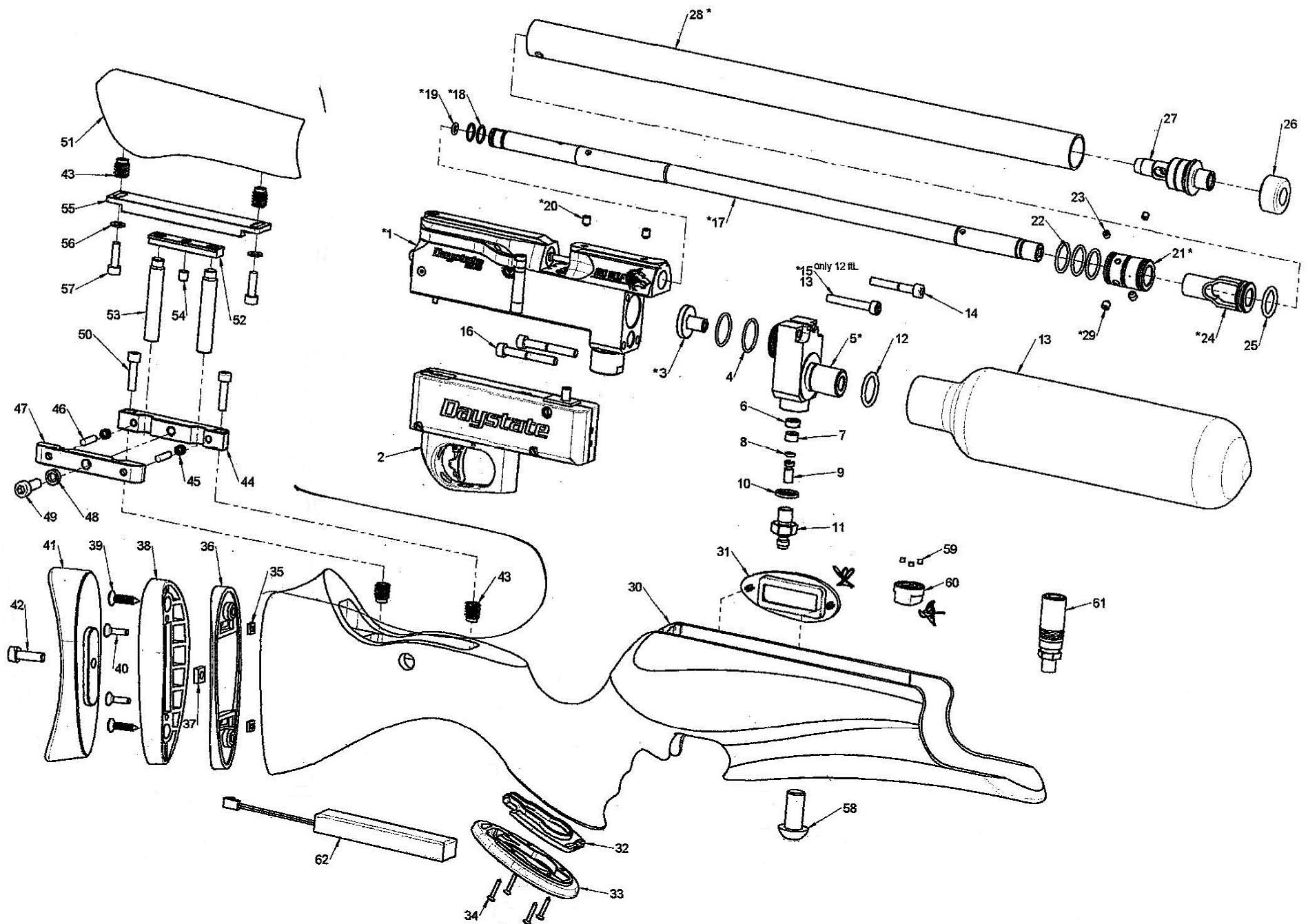


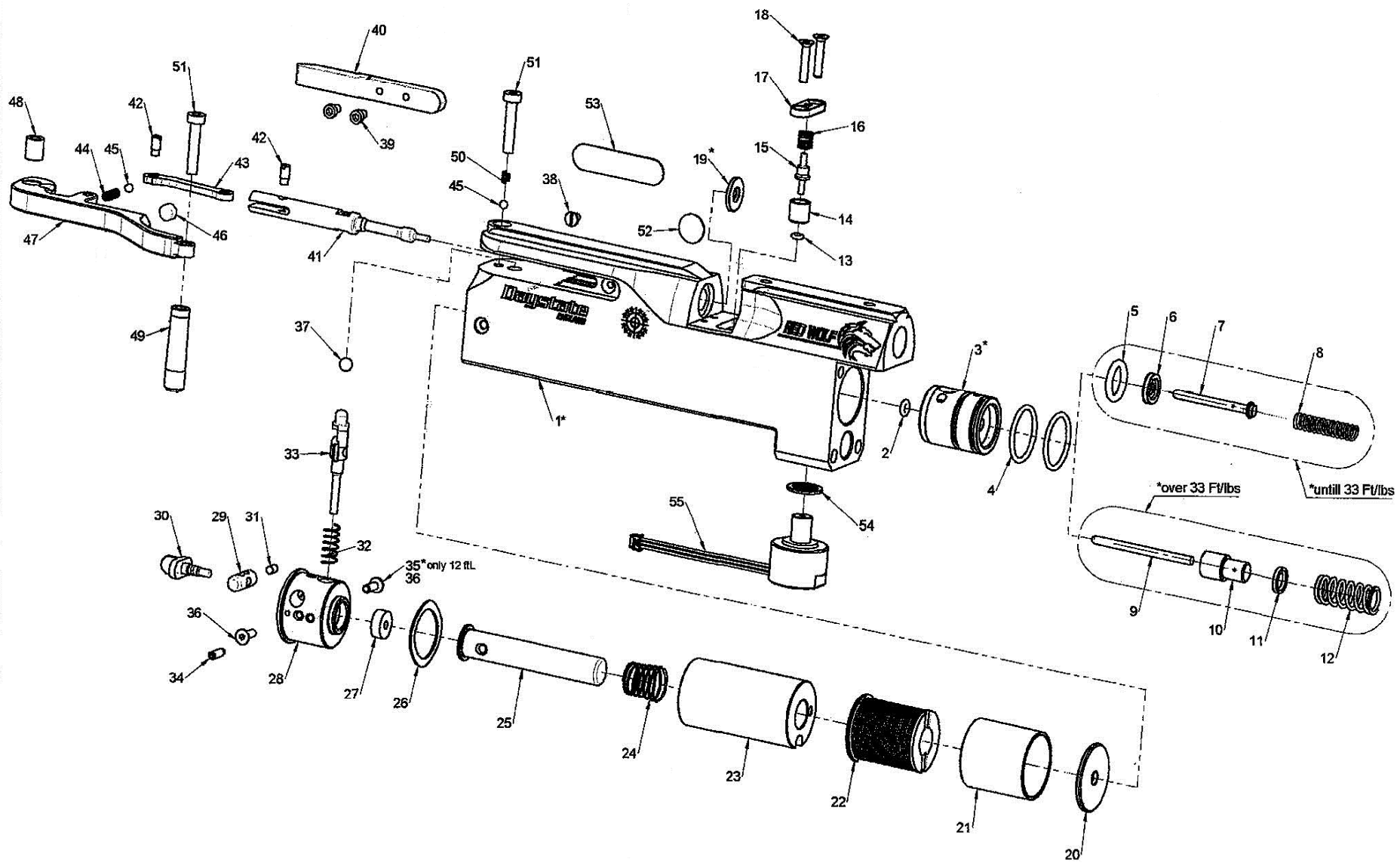
# RED WOLF - GENERAL ASSEMBLY



RED WOLF JUNE 29, 2017- MAIN						
PART NUMB.	DESCRIPTION	CODE	SOURCE	TYPE OF PROD	GENERAL	QTY
1	breech assy	SEE ASSY DETAIL				1
2	trigger assy	SEE ASSY DETAIL				1
3	housing B spring retainer_BP - 12 ftL	D3WWHBSPRE	IT	LAV.		1
	housing B spring retainer_BP - fac (same part but modified in UK)	D3WWHBSPRE	IT	LAV.		
4	o-ring Ø19.5x1.5-NBR-90Sh	D3ORN919515	UK	COMM.		2
5	housing B RED WOLF- bombola	D3RWHBTOOO	IT	LAV.	RW	1
6	air filter 1/8"	D3FILTRHUMK	UK	COMM.		1
7	filter spacer V2	D3FILTSPAV2	IT	LAV.		1
8	o-ring 006 Ø2.9x1.78 (2012) - urethane	D3ORURA06FV	UK	LAV.	ALL	1
9	stainless steel piston	D3PISTON00FV	UK	LAV.		1
10	dowty seal self centering 1/8 bsp	D3OR70617MV	UK	COMM.		1
11	male connector	D3MALECONCO	UK	LAV.		1
12	o ring 617 (Ø17.86x2.62)-NBR-70Sh	D3OR70617MV	UK	COMM.		1
13	carbon bottle 480cc	D3BOTTLE48L				1
14	skt cap - UNI5931 - M5x35	DK3SKTCM5X35	UK	COMM.		1 or 2
15	(illegible, only applies to 12 ftL, per diagram)					1
16	skt cap - UNI5931 - M5x40	D3SKTCM5X40	UK			2
17	Barrel LP - 17" cal0.177	D3WWBA17231	LW	CUSTOM	WOLV.017	1
	Barrel LP - 17" cal0.22	D3WWBA22231	LW	CUSTOM	WOLV.022	
	Barrel LP - 17" cal0.25	D3WWBA25231	LW	CUSTOM	WOLV.025	
	Poligonal Barrel - 23" cal0.22	D3WWBAR2223	LW	CUSTOM	WOLV.022-HP	
	Poligonal Barrel - 23" cal0.25	D3WWBAR2523	LW	CUSTOM	WOLV.025-HP	
	Poligonal Barrel - 23" cal0.30	D3WWBAR3000	LW	CUSTOM	WOLV.030-HP	
18	o-ring Ø10x1-NBR 70Sh	D3OR10X10CO	UK	COMM.	LP	2
	o-ring Ø12x1-NBR 70Sh	D3OR12X10CO	UK	COMM.	HP	
19	o-ring Ø4X1.5-NBR 70Sh (Wolv cal 0177 int barrel o-ring)	D3OR04X15CO	UK	COMM.	cal.0.177	1
	o-ring Ø5X1.5-NBR 70Sh (Wolv cal 022 int barrel o-ring)	D3OR05X15CO	UK	COMM.	cal.0.22	
	o-ring Ø6X1.5-NBR 70Sh (Wolv cal 025 int barrel o-ring)	D3OR06X15CO	UK	COMM.	cal.0.25	
	o-ring Ø7.1X1.6-NBR 70Sh (Wolv cal 030 int barrel o-ring)	D3OR071X16CO	UK	COMM.	cal.0.30	
20	skt set UNI5929 M5x6	D35KIM5X56C0	UK	COMM.		2
	Skt Set CIP DIN 91845H M6x5	D3SKTC6X5CO	UK	COMM.		
21	ISM_fix cap_RW_LP	D3RWISFILP	IT	LAV.	RW-LP	1
	ISM_fix cap_RW_HP	D3RWISFHP	IT	LAV.	RW-HP	
22	o-ring 017 - Ø17.17X1.78 (2068)-NBR-70Sh	D3ORN017OCO	UK	COMM.		3
23	skt set tip - UNI5927 - M4X4	D35KTM4X4CO	UK	COMM.		2
24	ISM_buffle Ø24_RW_LP	D3RWISMBUFLP	IT	LAV.	RW-LP	1
	ISM_buffle Ø24_RW_HP	D3RWISMBUFHP	IT	LAV.	RW-HP	
25	o ring 114 (Ø15.54x2.62)- NBR - 70Sh	D3OR114N70	UK	COMM.		1
26	knurled end cover	D3WWISKNEHP	IT	LAV.	WOLV	1
27	ISM end cap adaptor x Ø24 - 1/2 unf_RW	D3RWISMAD24	IT	LAV.	RW	1

RED WOLF JUNE 29, 2017- MAIN						
PART NUMB.	DESCRIPTION	CODE	SOURCE	TYPE OF PROD	GENERAL	QTY
28	ism_carbon tube_024_RW-LP	D3RWCATU24LP	IT	CUSTOM	RW-LP	1
	ism_carbon tube_024_RW-HP	D3RWCATU24HP	IT	CUSTOM	RW-HP	
29	skt set - UNI5929- M5X6	D35KTM5X6CO	UK	COMM.	RW-LP	2
	skt set - UNI5929- M5X5	D35KTM5X5CO	UK	COMM.	RW-HP	
30	stock RedWolf	D3RWSTKWA.1	IT-MIN	CUSTOM		1
31	bezel display_RW	D3RWBEZDIS	IT	STAMPO		1
32	battery door cover RW	D3RWBATDC	IT	STAMPO	RW	1
33	battery door body RW	D3RWBATDB	IT	STAMPO	RW	1
34	screw CSK 2.5x16 black	D3CSK25X16B	UK	COMM.	RW	4
35	nut DIN562- M4		IT-MIN	COMM.	RECOIL PAD	2
36	recoil pad base 1		IT-MIN.		RECOIL PAD	1
37	nut DIN562- M6		IT-MIN.	COMM.	RECOIL PAD	1
38	recoil pad base 2		IT-MIN.		RECOIL PAD	1
39	recoil pad fixing screw		IT-MIN.	COMM.	RECOIL PAD	2
40	skt csk UNI5933 M4x16		IT-MIN.	COMM.	RECOIL PAD	2
41	recoil pad		IT-MIN.		RECOIL PAD	1
42	skt cap - UNI 5931- M6x20		IT-MIN.	COMM.	RECOIL PAD	1
43	stock thread insert Ø10x12-M5		IT-MIN.	COMM.	WWEL	4
44	KIT REG. NAS.GRIF. - BASE FISSA CALCIO	3MET058	IT-GARB.		KIT REG. NAS.GRIF.	1
45	KIT REG. NAS.GRIF. - MOLLA BASE CALCIO	3MET061	IT-MIN.	SPRING	KIT REG. NAS.GRIF.	2
46	rullino Ø4x18	3MET060	IT-GARB.	COMM.		2
47	KIT REG. NAS.GRIF. - BASE MOBILE CALCIO	3MET059	IT-GARB.		KIT REG. NAS.GRIF.	1
48	KIT REG. NAS.GRIF. - rondella di spess Ø10X3.7	3MET098	IT GARB.		KIT REG. NAS.GRIF.	1
49	VITE TCEI UNI5931 M6x20 INOX	3MET097	IT-GARB.	COMM.(vit)	KIT REG. NAS.GRIF.	1
50	VITE TCEI UNI5931 M5X20	3MET99	IT-MIN.	COMM.(vit)		2
51	cheek rest Redwolf	D3RWSTKWA.1	IT-MIN.	LAV.		1
52	KIT REG. NAS.GRIF. - BASE MOBILE NASELLO	3MET064.1	IT GARB.	LAV.	KIT REG. NAS.GRIF.	1
53	KIT REG. NAS.GRIF. - perno Ø10X50_M8	3MET064.2-50	IT GARB.	LAV.	KIT REG. NAS.GRIF.	2
54	grano UNIS923 M6x6 INOX	3MET066	IT GARB.	COMM.(vit)	KIT REG. NAS.GRIF.	1
55	KIT REG. NAS.GRIF. - BASE FISSA NASELLO	3MET065	IT GARB.	LAV.	KIT REG. NAS.GRIF.	1
56	rondella UNI 6592 MS		IT-MIN.	COMM		2
57	VITE TCEI UNI5931 MSX16 INOX	3MET???	IT-MIN.	COMM.		2
58	button head IS07380 M12x25 S.S	D3HEA122SCO	UK	COMM.		1
59	MAGNET N45 DISC NICKEL PLATED 3X3 W2	D3W2MAGNET	UK	COMM.		3
60	dust cover magnetic	D3DUSTCOMAG	IT	STAMPO		1
61	EXTENDED Quick Coupler Socket 1/8 BSP thread	D3EXQUCOSK	UK	CUSTOM		1
62	Li-Po battery 7.4v custom wired	D3RWBATTOO	UK	CUSTOM		1
63	Li-Po battery 7.4v battery charger	D3RWBATTCH	UK	CUSTOM		1

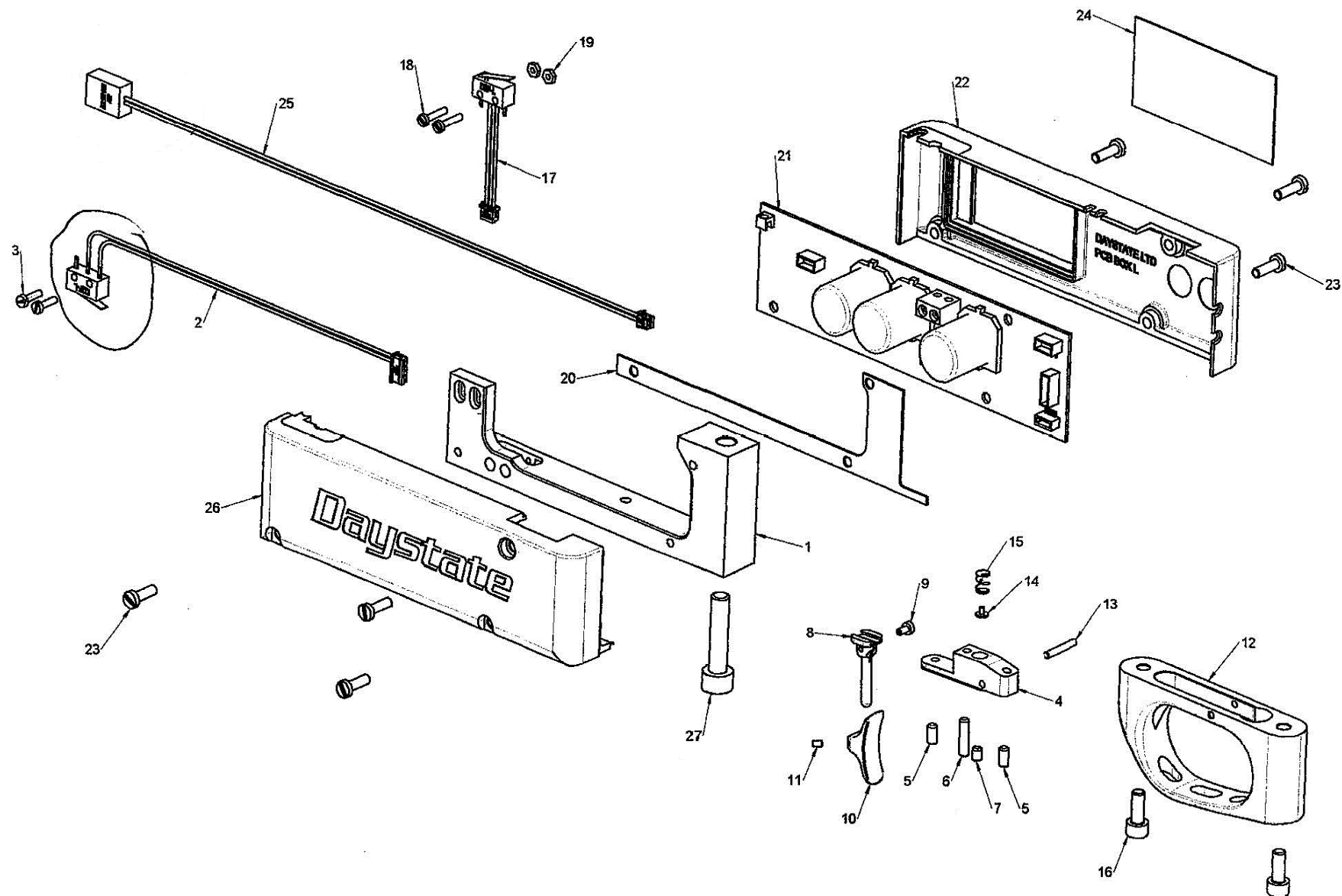
# RED WOLF - BREECH ASSEMBLY



RED WOLF JUNE 29, 2017- BREECH						
PART NUMB.	DESCRIPTION	CODE	SOURCE	TYPE OF PROD	GENERAL	QTY
1	integral breechblock REDWOLF - LP	D3RWBKLP000	IT	LAV.	RW	1
	integral breechblock REDWOLF - LP	D3RWBKHP000	IT	LAV.	RW-HP	
2	o-ring 006 - Ø2.9x1.78 (2012) - NBR - 70Sh	D3ORN7006CO	UK	COMM.		1
3	core valve - cat A	D3BPCOVA12	IT	LAV.	BP-LP	1
	core valve - cat B	D3BPCOVA22H	IT	LAV.	BP-HP	
4	o-ring 018 - (Ø18.77x1.78) - NBR - 70Sh	D3DEROR018XX	UK	COMM.		1
5	o-ring 111 Ø10.77x2.62 (3043) urethane	D3ORN9111CO	UK	COMM.		1
6	valve seal Ø4.5	D3HARSEAL12	UK	LAV.	ALL 12>50 ft/lbs	1
7	valve stem	D3STEMHARPPX	UK	LAV.	ALL 12>50 ft/lbs	1
8	stem spring	D3SPR3513CO	IT	MOLLA	ALL from 12 to 30 ft/lbs	1
9	Stem (hp)	D3STEMFACAR	UK	LAV.	ALL 60>80 ft/lbs	1
10	Peek Valve Seal A/R FAC	D3PEEKVSARF	UK	LAV.	ALL 60>80 ft/lbs	1
11	peak seal brass spacer	D3STVALSP30	UK	LAV.	ALL 60>80 ft/lbs	1
12	Peek seal spring 80	D3SPR63FO5M	IT	MOLLA	ALL 60>80 ft/lbs	1
13	o-ring Ø2x15.-NBR-70Sh	D3OR02X15CO	UK	COMM.		1
14	pin activator o-ring retainer	03WWPINORT	IT	LAV.	WOLV	1
15	pin activator	D3WWPINACTO	IT	LAV.	WOLV	1
16	pin activator spring	D3WWSPRACHP	IT	MOLLA	WOLV	1
17	pin activator plug	D3WWPINPLUG	IT	LAV.	WOLV	1
18	skt csk - UNI5933 - M3x16	D3CSKT316CO	UK	COMM .		2
19	alum breech insert cal.0.17"	D3WWALINS17	UK	LAV.	WOLV.17	1
	alum breech insert cal.0.22"	D3WWALINS22	UK	LAV.	WOLV.22	
	alum breech insert cal.0.25"	D3WWALINS25	UK	LAV.	WOLV.25	
	alum breech insert cal.0.30"	D3WWALINS30	UK	LAV.	WOLV.30	
20	solenoid front spacer	D3SOLFRSP1	??	LAV.	SOLENOID	1
21	solenoid cage	D3SOLCAG01	??	LAV.	SOLENOID	1
22	Solenoid (Black Plastic.) PURE HP	D3S0LPUREHP	UK	CUSTOM	ALLEL	1
23	solenoid spacer	D3S0LSPAC01	??	LAV.	SOLENOID	1
24	solenoid spring	D3SOLSPRICD	IT	MOLLA	ALL.EL	1
25	solenoid striker hammer	D3SOSTHAMXX	UK	LAV.		1
26	wave spring washer Ø25.8xØ19.3 sp0.3 H1.7	D3WS2581930317	UK	COMM.		1
27	rubber shock absorber	D3RUBSH0CKXX	UK	COMM.	BP.EL	1
28	Rear cover_RW	ID3WWSLREACO	IT		RW	
29	safety button 1_RW	D3RWLSABU1	IT	LAV.	RW	
30	safety button 2_RW	D3RWLSABU2	IT	LAV.	RW	1
31	skt set_UNI5927= M 3x6.	D3UN5927M3X6	UK	COMM .		2
32	safety pin spring	D3WWSPRPIHP	IT	MOLLA	WOLV.	1
33	bolt safety pin_RW	D3RWBOSAPI	IT	LAV.	RW	1
34	skt set UNI5925_M3x10	D3UN5925M3X10	UK	COMM.		1
35	illgible, unable to determine from diagram					
36	skt csk - UNI5933 - M3x10	D3SKTCM310CO	UK	COMM		1 or 2
37	ball bearing Ø5	D3BALBEA5	UK	COMM		1

RED WOLF JUNE 29, 2017- BREECH						
PART NUMB.	DESCRIPTION	CODE	SOURCE	TYPE OF PROD	GENERAL	QTY
38	Slit Csk - UNI 6109 - M3x5	D3CSKM3X5	UK	COMM		1
39	screw_UNI9327_M3x5	DS3KTCL35CO	UK	COMM	BP	2
40	side lever cover	D3BPSLEVCOO	IT	LAV.	BP	1
41	breech bolt cal.0.17" - BP	D3BPBRBOL17	IT	LAV.	BP.177	1
	breech bolt cal.0.22" - BP	D3BPBRBOL22	IT	LAV.	BP.22	
	breech bolt cal.0.25" - BP	D3BPBRBOL25	IT	LAV.	BP.25	
	breech bolt cal.0.30" - BP	D3BPBRBOL30	IT	LAV.	BP.30	
42	side lever pin screw	D3BPSILEPS0	IT	LAV.	BP	2
43	side lever link	D3BPSLEVL10	IT	LAV.	BP	1
44	side lever BB spring	D3DBPSILESPO	IT	MOLLA	BP	1
45	BallBearing 1/8" (3.2)	D3BAL1800SC	UK	COMM		2
46	magnet Ø6x4	D3MAGNETSCO	IT	COMM		1
47	side lever	D3BPSLEV000	IT	LAV.	BP	1
48	side lever spacer	D3BPSLESP0	IT	LAV.	BP	1
49	side lever handle	D3BPSILEHAO	IT	LAV.	BP	1
50	safety button bb spring_RW	D3RWSABUSP	IT	CUSTOM	RW	1
51	screw_UNI9327_M4x20	D3SKTCL4X20	UK	COMM	BP	2
52	WP disc	DETICHETTEEX	IT	CUSTOM	ALL	1
53	breech side sticker	D3BPBRBOL30	IT	CUSTOM	BP	1
54	dowty seal self-centering M8	D3DOWPP213CO	UK	COMM		1
55	pressure sensor wired_PULSAR	D3PRESSENB	UK	CUSTOM	BP-EL	1

# RED WOLF - TRIGGER ASSEMBLY



RED WOLF JUNE 29, 2017- TRIGGER						
PART NUMB.	DESCRIPTION	CODE	SOURCE	TYPE OF PROD	GENERAL	QTY
1	circuit board's holder Redwolf	D3RWCIBOHO	IT	LAV	RW	1
2	cable-wiring_trigger_RW	D3WIRWTRBO	UK	CUSTOM	RW	1
3	slt chead zinc - UNI6107 - M2x8	D3CHEM208CO	UK	COMM.		2
4	trigger body GP	D3TRIBODYTB	IT	LAV	GP	1
5	skt set - UNI5923 - M3x6	DSCKM3XM6CO	UK	COMM.		2
6	skt set - UNI5923 - M3x12	D3SKTFM312CO	UK	COMM.		1
7	skt set - UNI5923 - M3x4	BSK3M3X4	UK	COMM.		1
8	trigger blade pin	D3TRPINTB	IT	LAV	GP	1
9	skt cap_UNI5931_M2x5_inox	D3CAPM2X5IN	IT	COMM.		1
10	trigger blade GP	D3BLADMATTB	IT	LAV	GP	1
11	skt cap_UNI5923_M2x3	D3SETM2X3XX	IT	COMM.		1
12	trigger guard	D3WWTRIGUAO	IT	STAMPO	WOLV.	1
13	dowel - IS02338-02x14	D3DOW02X14X	UK	COMM.		1
14	brass spring guide	D3BRASTRIGUI	UK	LAV.		1
15	elec. trigger spring LC0014B	D3SPR14B2CO	UK	MOLLA		1
16	skt cap_UNI5931_M4x10	D3UN5931M4X10	UK	COMM.		2
17	pulsar bolt safety pin switch cable-wiring	D3BPBREMISW	UK	CUSTOM	BP EL	1
18	slt chead zinc - UNI6107 - M2x10	03CHEM210CO	UK	COMM.		2
19	nut- DIN934- M2	D3NUT2MMOCO	UK	COMM.		2
20	pcb spacer	03PUPCBSPAC	IT	CUSTOM	BP EL.	1
21	circuit board-BP	03SUBBLPCOM	UK	CUSTOM	BP.EL	1
22	circuit board box left	03BPBOXLHO	IT	STAMPO	BP.EL	1
23	slt chead zinc - UNI6107 - M3x10	03CHEM310CO	UK	COMM.	BP.EL	6
24	display cover	D3DISPCOVBP	IT	CUSTOM	BP.EL.	1
25	cable-wiring_battery_board_RW	03WIRWBABO	UK	CUSTOM	RW	1
26	circuit board box right	D3BPBOXRHO	IT	STAMPO	BP.EL	1
27	skt cap - UN15931 - M6x25	D3SKTCM6X25	UK	COMM.	BP.EL.	1