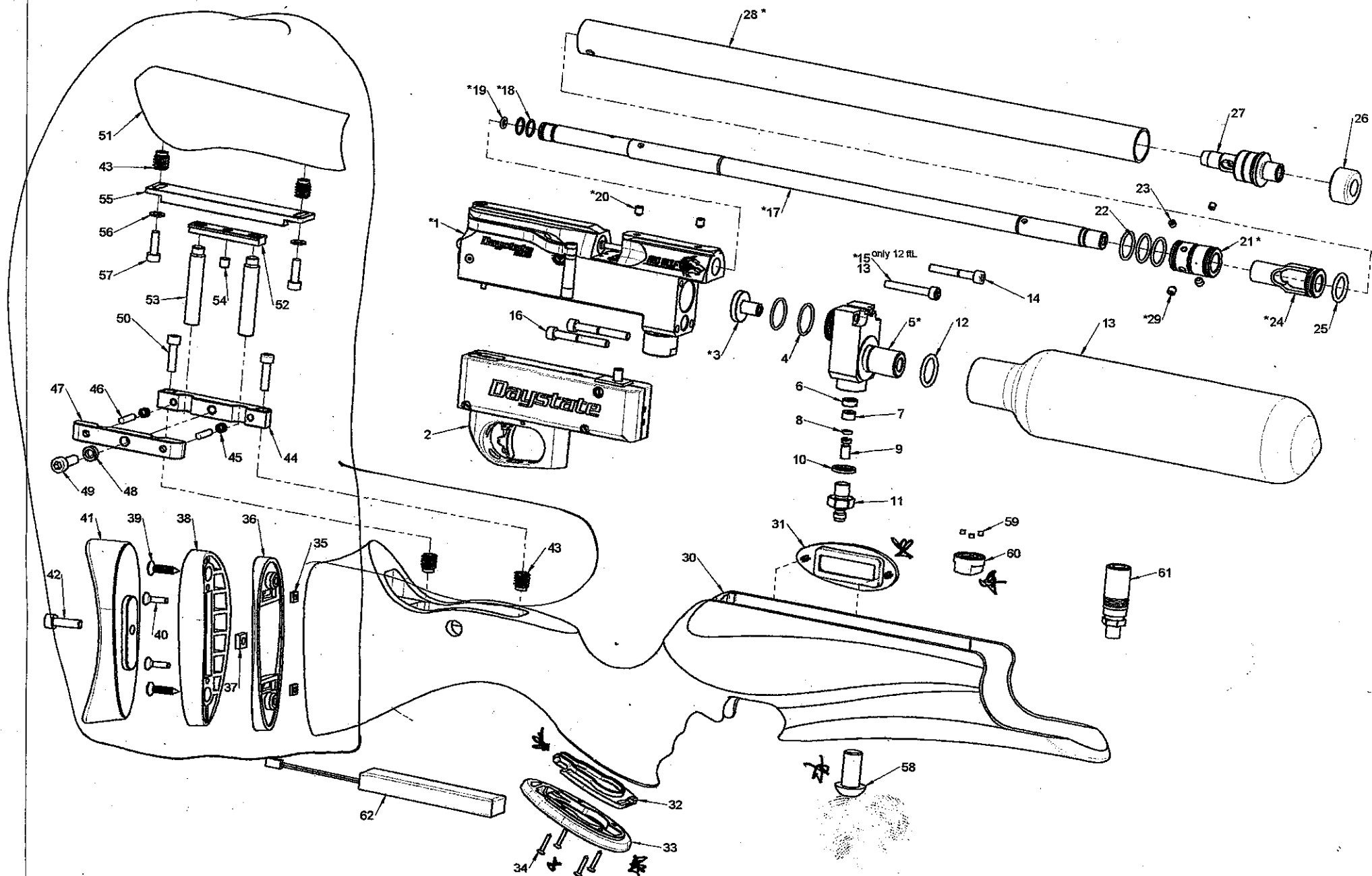


RED WOLF - GENERAL ASSEMBLY

Daystate



June 27, 2017

RED WOLF June 29, 2017 - MAIN

PART NUMB.	DESCRIPTION	CODE	SOURCE	TYPE OF PROD.	GENERAL	Q.TY
1	breech assy	SEE ASSY DETAIL				
2	trigger assy	SEE ASSY DETAIL				
3	housing B spring retainer BP - 12ftL	D3WWHBSPRE	IT	LAV.		1
	housing B spring retainer BP - FAC (same part but modified in UK)	D3WWHBSPRE	IT	LAV.		
4	o-ring Ø19.5x1.5-NBR-90Sh	D3ORN919515	UK	COMM.		2
5	housing B RED WOLF - bombola	D3RWHBBT000	IT	LAV.	RW	1
6	air filter 1/8"	D3FILTRHUMK	UK	COMM.		1
7	filter spacer V2	D3FILTPAV2	IT	LAV.		1
8	o-ring 006 - Ø2.9x1.78 (2012) - urethane	D3ORURA06FV	UK	COMM.	ALL	1
9	stainless steel piston	D3PISTON00FV	UK	LAV.		1
10	dowty seal self centering 1/8 bsp	D3DOWSE18CO	UK	COMM.		1
11	male connector	D3MALECONCO	UK	LAV.		1
12	o ring 617 (Ø17.86x2.62) -NBR - 70Sh	D3OR70617MV	UK	COMM.		1
13	carbon bottle 480cc	D3BOTTLE48L				1
14	skt cap - UNI5931 - M5x35	D3SKTCM5X35	UK	COMM.		1 or 2
15						
16	skt cap UNI5931 M5x40	D3SKTCM5X40	UK			2
17	Barrel LP - 17" cal 0.177	D3WWBAR17231	LW	CUSTOM	WOLV 017	1
	Barrel LP - 17" cal 0.22	D3WWBAR22231	LW	CUSTOM	WOLV 022	
	Barrel LP - 17" cal 0.25	D3WWBAR25231	LW	CUSTOM	WOLV 025	
	Polygonal Barrel HP - 23" CAL 0.22	D3WWBAR2223	LW	CUSTOM	WOLV 022-HP	
	Polygonal Barrel HP - 23" CAL 0.25	D3WWBAR2523	LW	CUSTOM	WOLV 025-HP	
18	o-ring Ø10x1.5-NBR-70Sh	D3OR10X10CO	UK	COMM.		2
	o-ring Ø12x1.5-NBR-70Sh	D3OR12X10CO	UK	COMM.	HP	
19	o-ring Ø4x1.5-NBR-70Sh (Wolv cal 0177 int barrel o-ring)	D3OR04X15CO	UK	COMM.	cal 0.177	1
	o-ring Ø5x1.5-NBR-70Sh (Wolv cal 022 int barrel o-ring)	D3OR05X15CO	UK	COMM.	cal 0.22	
	o-ring Ø6x1.5-NBR-70Sh (Wolv cal 025 int barrel o-ring)	D3OR06X15CO	UK	COMM.	cal 0.25	
	o-ring Ø7.1x1.6-NBR-70Sh (Wolv cal 030 int barrel o-ring)	D3OR71X16CO	UK	COMM.	cal 0.30	
20	skt set - UNI5929 - M5x6	D3SKTM5X5CO	UK	COMM.		2
	Skt Set CUP DIN 918 45H M6x5	D3SKTC6X5CO	UK	COMM.		
21	ISM fix cap RW LP	D3RWISMEIHP	IT	LAV.	RW-LP	1
	ISM fix cap RW HP	D3RWISMEIHP	IT	LAV.	RW-HP	
22	o-ring 017 - Ø17.17x1.78 (2068)-NBR-70Sh	D3ORN017OCO	UK	COMM.		3
23	skt set tip - UNI5927 - M4x4	D3SKTM4X4CO	UK	COMM.		2
24	ISM baffle Ø24 RW LP	D3RWISMBUHP	IT	LAV.	RW-LP	1
	ISM baffle Ø24 RW HP	D3RWISMBUHP	IT	LAV.	RW-HP	
25	o ring 114 (Ø15.54x2.62) - NBR - 70Sh	D3OR114N70	UK	COMM.		1
26	knurled end cover	D3WWISKNEHP	IT	LAV.	WOLV	1
27	ISM end cap adaptor x Ø24 - 1/2 unf RW	D3RWISMA024	IT	LAV.	RW	1
28	ISM carbon tube Ø24 RW LP	D3RWGATU24LP	IT	CUSTOM	RW-LP	1
	ISM carbon tube Ø24 RW HP	D3RWGATU24HP	IT	CUSTOM	RW-HP	
29	skt set - UNI5929 - M5x4	D3SKTM5X5CO	UK	COMM.	RW-LP	2
	skt set - UNI5929 - M5x5	D3SKTM5X5CO	UK	COMM.	RW-HP	
30	stock RedWolf	D3RWSTKWA	IT-MIN.	CUSTOM		1
31	bezel display RW	D3RWBEZDIS	IT	STAMPO	RW	1

They must have the thread as the last update

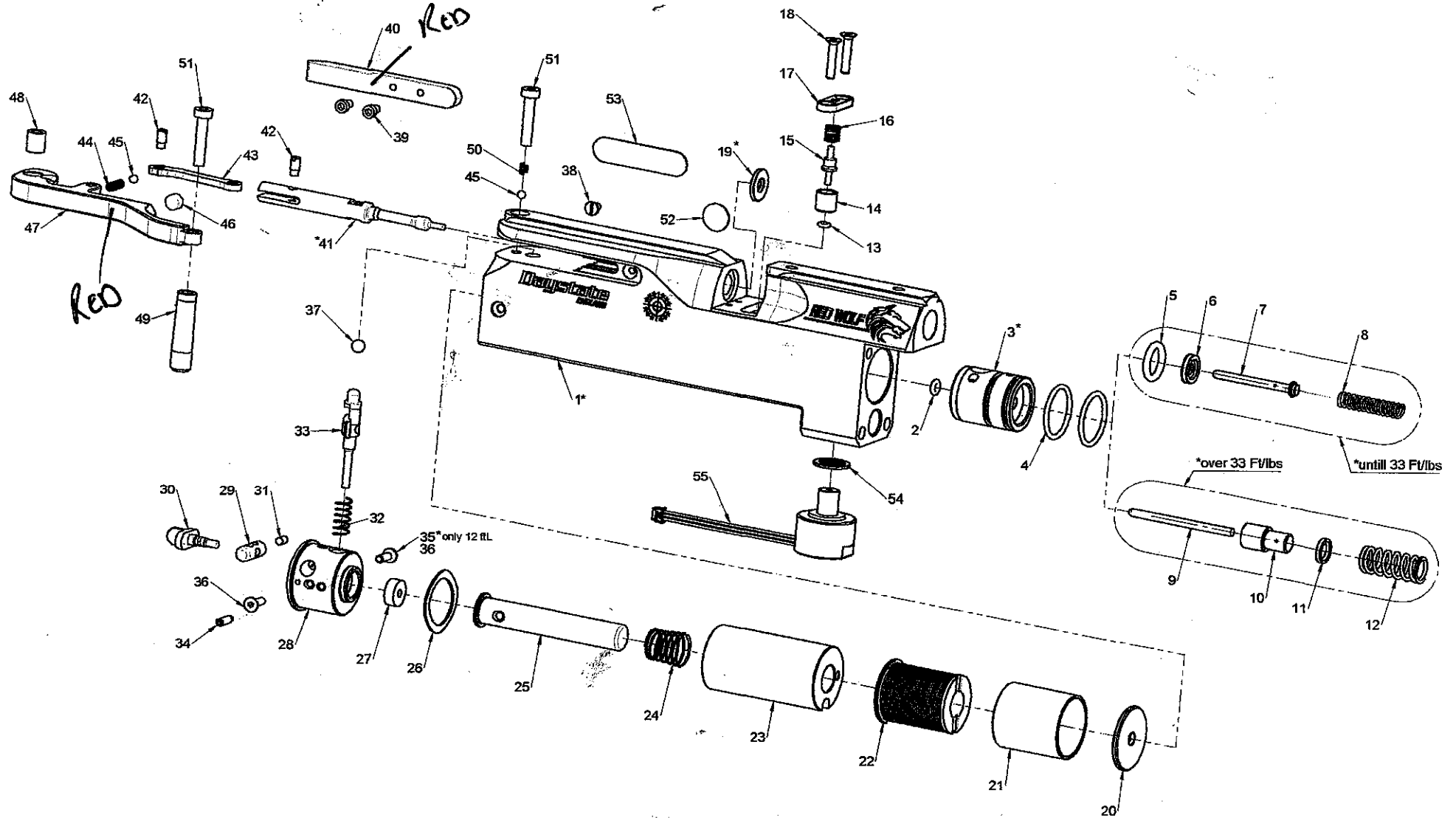
32	battery door cover RW	D3RWBATDC	IT	STAMPO	RW	1
33	battery door body RW	D3RWBATDB	IT	STAMPO	RW	1
34	screw CSK 2.5x16 black	D3CSK25X16B	UK	COMM.	RW	4
35	nut DIN562 - M4		IT-MIN.	COMM.	RECOIL PAD	2
36	recoil pad base 1		IT-MIN.		RECOIL PAD	1
37	nut DIN562 - M6		IT-MIN.	COMM.	RECOIL PAD	1
38	recoil pad base 2		IT-MIN.		RECOIL PAD	1
39	recoil pad fixing screw		IT-MIN.	COMM.	RECOIL PAD	2
40	skt csk UNI5933 M4x16		IT-MIN.	COMM.	RECOIL PAD	2
41	recoil pad		IT-MIN.		RECOIL PAD	1
42	skt cap - UNI 5931 - M6x20		IT-MIN.	COMM.	RECOIL PAD	1
43	stock thread insert Ø10x12-M5		IT-MIN.	COMM.	WW EL.	4
44	KIT REG. NAS.GRIF. - BASE FISSA CALCIO	3MET058	IT-GARB.		KIT REG. NAS.GRIF.	1
45	KIT REG. NAS.GRIF. - MOLLA BASE CALCIO	3MET061	IT-MIN.	SPRING	KIT REG. NAS.GRIF.	2
46	rullino Ø4x18	3MET060	IT-GARB.	COMM.		2
47	KIT REG. NAS.GRIF. - BASE MOBILE CALCIO	3MET059	IT-GARB.		KIT REG. NAS.GRIF.	1
48	KIT REG. NAS.GRIF. - rondella di spess Ø10x3.7	3MET098	IT-GARB.		KIT REG. NAS.GRIF.	1
49	VITE TCEI UNI5931 M6x20 INOX	3MET097	IT-GARB.	COMM.(VIT)	KIT REG. NAS.GRIF.	1
50	VITE TCEI UNI5931 M5x20	3MET99	IT-MIN.	COMM.(VIT)		2
51	cheek rest Redwolf	D3RWSTKWA.1	IT-MIN.	LAV.		1
52	KIT REG. NAS.GRIF. - BASE MOBILE NASELLO	3MET064.1	IT-GARB.	LAV.	KIT REG. NAS.GRIF.	1
53	KIT REG. NAS.GRIF. - perno Ø10x50 M8	3MET064.2-50	IT-GARB.	LAV.	KIT REG. NAS.GRIF.	2
54	grano UNI5923 M6x6 INOX	3MET066	IT-GARB.	COMM.(vit)	KIT REG. NAS.GRIF.	1
55	KIT REG. NAS.GRIF. - BASE FISSA NASELLO	3MET065	IT-GARB.	LAV.	KIT REG. NAS.GRIF.	1
56	rondella UNI 6592 M5		IT-MIN.	COMM		2
57	VITE TCEI UNI5931 M5x16 INOX	3MET???	IT-MIN.	COMM.		2
58	button head ISO7380 M12x25 S.S	D3HEA1225CO	UK	COMM.		1
59	MAGNET N45 DISC NICKEL PLATED 3X3 W2	D3W2MAGNET	UK	COMM.		3
60	dust cover magnetic	D3DUSTCOMAG	IT	STAMPO		1
61	EXTENDED Quick Coupler Socket 1/8 BSP thread	D3EXQUCOSK	UK	CUSTOM		1
62	Li-Po battery 7.4v custom wired	D3RWBATT00	UK	CUSTOM		1
63	Li-Po battery 7.4v battery charger	D3RWBATTCH	UK	CUSTOM		1

all from Minelli , one sub-assembly

table
version
version
version



RED WOLF - BREECH ASSEMBLY



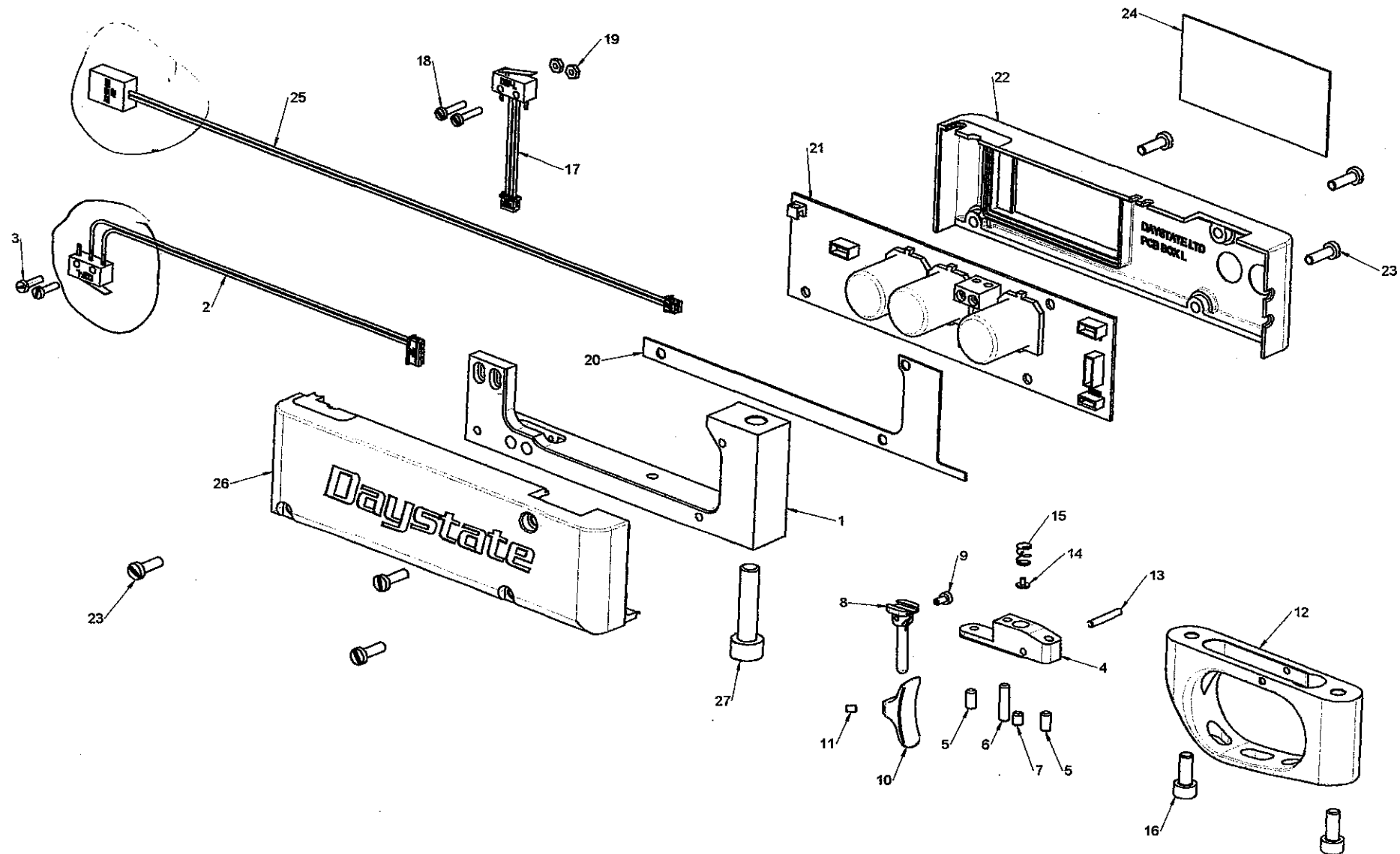
RED WOLF June 29, 2017 - BREECH

PART NUMB.	DESCRIPTION	CODE	SOURCE	TYPE OF PROD.	GENERAL	Q.TY
1	Integral breech block REDWOLF - LP	D3RWBKBP000	IT	LAV.	RW	1
2	Integral breech block REDWOLF - HP	D3RWBKHP000	IT	LAV.	RW-HP	1
3	o-ring 006 - Ø2.9x1.78 (2012) - NBR - 70Sh	D3ORN7006CO	UK	COMM.		1
3	core valve - cat. A	D3BPCOVA12A	IT	LAV.	BP-LP	1
4	core valve - cat. B	D3BPCOVA22H	IT	LAV.	BP-HP	1
4	o ring 018 (Ø18.77x1.78) -NBR - 70Sh	D3DEROR018XX	UK	COM.		2
5	o-ring 151 - Ø10.77x2.62 (3043) urethane	D3ORN1115CO	UK	COMM.		1
6	valve seal Ø4.5	D3HABSEAL12	UK	LAV.	ALL 12>50 ft/lbs	1
7	valve stem	D3STEM12ARBXX	UK	LAV.	ALL 12>50 ft/lbs	1
8	stem spring	D3SPR351RGO	IT	MOLLA	ALL from 12 to 30 ft/lbs	1
9	Stem (hp)	D3STEMFACAR	UK	LAV.	ALL 60>80 ft/lbs	1
10	Peek Valve Seal A/R FAC	D3PEEKV5ARF	UK	LAV.	ALL 60>80 ft/lbs	1
11	peek seal brass spacer	D3STVALSP30	UK	LAV.	ALL 60>80 ft/lbs	1
12	Peek seal spring 80	D3SPR63F05M	IT	MOLLA	ALL 60>80 ft/lbs	1
13	o-ring Ø2x1.5-NBR-70Sh	D3OR02X15CO	UK	COMM.		1
14	pin activator o-ring retainer	D3WWPINORT	IT	LAV.	WOLV	1
15	pin activator	D3WWPINACTO	IT	LAV.	WOLV	1
16	pin activator spring	D3WWSPRACHP	IT	MOLLA	WOLV	1
17	pin activator plug	D3WWPINPLUG	IT	LAV.	WOLV	1
18	skt csk - UNI5933 - M3x16	D3CKT316CO	UK	COMM.		2
19	alum breech insert cal.0.17"	D3WWALINS17	UK	LAV.	WOLV.17	1
	alum breech insert cal.0.22"	D3WWALINS22	UK	LAV.	WOLV.22	
	alum breech insert cal.0.25"	D3WWALINS25	UK	LAV.	WOLV.25	
	alum breech insert cal.0.30"	D3WWALINS30	UK	LAV.	WOLV.30	
20	solenoid front spacer	D3SOLFRSP1	??	LAV.	SOLENOID	1
21	solenoid cage	D3SOLCAG01	??	LAV.	SOLENOID	1
22	Solenoid (Black Plastic) PURE HP	D3SOLPUREHP	UK	CUSTOM	ALL EL.	1
23	solenoid spacer	D3SOLSPAC01	??	LAV.	SOLENOID	1
24	solenoid spring	D3SOLSPICD	IT	MOLLA	ALL EL.	1
25	solenoid striker hammer	D3SOSTHAMXX	UK	LAV.		1
26	wave spring washer Ø25.8xØ19.3 sp0.3 H1.7	D3WS2581930317	UK	COMM.		1
27	rubber shock absorber	D3RUBSHOCIOX	UK	COMM.	BP.EL	1
28	Rear cover_RW	D3WWSLREACO	IT		RW	1
29	safety button 1_RW	D3RWWSLSABU1	IT	LAV.	RW	1
30	safety button 2_RW	D3RWWSLSABU2	IT	LAV.	RW	1
31	skt set_UNI5927_M3x6.	D3UN5927M3X6	UK	COMM.		2
32	safety pin spring	D3WWSPRPIHP	IT	MOLLA	WOLV.	1
33	bolt safety pin_RW	D3RWWSBOSAPI	IT	LAV.	RW	1
34	skt set UNI5925_M3x10	D3UN5925M3X10	UK	COMM.		1
36	skt csk - UNI5933 - M3x10	D3SKTCM310CO	UK	COMM.		1or2
37	ball bearing Ø5	D3BALBEA5	UK	COMM.		1
38	Slt Csk - UNI 6109 - M3x5	D3CSKM3X5	UK	COMM.		1
39	screw_UNI9327_M3x5	D3SKTCL35CO	UK	COMM.	BP	2
40	side lever cover	D3BPSLEVCOO	IT	LAV.	BP	1
41	breech bolt cal.0.17" - BP	D3BPBRBOL17	IT	LAV.	BP.177	1
	breech bolt cal.0.22" - BP	D3BPBRBOL22	IT	LAV.	BP.22	
	breech bolt cal.0.25" - BP	D3BPBRBOL25	IT	LAV.	BP.25	
	breech bolt cal.0.30" - BP	D3BPBRBOL30	IT	LAV.	BP.30	
42	side lever pin screw	D3BPSILEPSO	IT	LAV.	BP	2

43	side lever link	D3BPSLEVLI0	IT	LAV.	BP	1
44	side lever BB spring	D3BPSILESP0	IT	MOLLA	BP	1
45	BallBearing 1/8" (3.2)	D3BAL1800SC	UK	COMM.		2
46	magnet Ø6x4	D3MAGNETSCO	IT	COMM.		1
47	side lever	D3BPSLEV000	IT	LAV.	BP	1
48	side lever spacer	D3BPSLESP0	IT	LAV.	BP	1
49	side lever handle	D3BPSILEHA0	IT	LAV.	BP	1
50	safety button bb spring_RW	D3RWSABUSP	IT	CUSTOM	RW	1
51	screw_UNI9327_M4x20	D3SKTCL4X20	UK	COMM.	BP	2
52	WP disc	DETICHETTEX	IT	CUSTOM	ALL	1
53	breech side sticker	D3BPBRISIT0	IT	CUSTOM.	BP	1
54	dowty seal self-centering M8	D3DOWPP213CO	UK	COMM.		1
55	pressure sensor wired _ PULSAR	D3PRESSENBP	UK	CUSTOM	BP-EL	1

variable
LP version
HP version
8th edition of Abs

RED WOLF - TRIGGER ASSEMBLY



RED WOLF June 29, 2017 - TRIGGER

PART NUMB.	DESCRIPTION	CODE	SOURCE	TYPE OF PROD.	GENERAL	Q.TY
1	circuit board's holder Redwolf	D3RWCIBOHO	IT	LAV.	RW	1
2	cable-wiring trigger_RW	D3WIRWTRBO	UK	CUSTOM	RW	1
3	slt chead zinc - UNI6107 - M2x8	D3CHEM208CO	UK	COMM.		2
4	trigger body GP	D3TRBODYTB	IT	LAV.	GP	1
5	skt set - UNI5923 - M3x6	D3CKM3XM6CO	UK	COMM.		2
6	skt set - UNI5923 - M3x12	D3SKTFM312CO	UK	COMM.		1
7	skt set - UNI5923 - M3x4	BSKSM3X4	UK	COMM.		1
8	trigger blade pin	D3TRIGPINTB	IT	LAV.	GP	1
9	skt cap_UNI5931_M2x5_inox	D3CAPM2X5IN	IT	COMM.		1
10	trigger blade GP	D3BLADMATTB	IT	LAV.	GP	1
11	skt set_UNI5923_M2x3	D3SETM2X3XX	IT	COMM.		1
12	trigger guard	D3WWTRIGUAO	IT	STAMPO	WOLV.	1
13	dowel - ISO2338 - Ø2x14	D3DOW02X14X	UK	COMM.		1
14	brass spring guide	D3BRASTRIGUI	UK	LAV.		1
15	elec. trigger spring LCO014B	D3SPR14B2CO	UK	MOLLA		1
16	skt cap_UNI5931_M4x10	D3UN5931M4X10	UK	COMM.		2
17	pulsar bolt safety pin switch cable-wiring	D3BPBREMISW	UK	CUSTOM	BP EL	1
18	slt chead zinc - UNI6107 - M2x10	D3CHEM210CO	UK	COMM.		2
19	nut - DIN934 - M2	D3NUT2MMOCO	UK	COMM.		2
20	pcb spacer	D3PUPCBSPAC	IT	CUSTOM	BP EL	1
21	circuit board-BP	D3SUBBLPCOM	UK	CUSTOM	BP.EL	1
22	circuit board box left	D3BPBOXLHO	IT	STAMPO	BP.EL	1
23	slt chead zinc - UNI6107 - M3x10	D3CHEM310CO	UK	COMM.	BP.EL	6
24	display cover	D3DISPCOVBP	IT	CUSTOM	BP.EL	1
25	cable-wiring battery_board_RW	D3WIRWBABO	UK	CUSTOM	RW	1
26	circuit board box right	D3BPBOXRH0	IT	STAMPO	BP.EL	1
27	skt cap - UNI5931 - M6x25	D3SKTCM6X25	UK	COMM.	BP.EL	1

D3GPMATCHER

variable

LP version

HP version